

HULLAVINGTON

(Hundlavinton)

News

JUNE 2023 ~ JULY 2023

Hullavington News is **FREE!** - Please take a copy
(and don't forget one for your less abled neighbours - help share our news!)

In this issue...

- | | |
|---|-----------------------------|
| 02) Contributions | 26) History Spot |
| 03) Editorial | 28) Village Walk #2 |
| 14) Village Life | 32) Mind your own business |
| 16) Sweet & Savoury | 33) Village Hall News |
| 18) Councillors Questions | 50) 200 Club |
| 19) Village Image & Letters to the Editor | 52) Film Club |
| 20) Hullavington Community update | 53) Meet the Villager |
| 22) Editorial Team Quiz | 55) Past Times |
| 24) Book Group | 56) Hullavington 'Whats on' |

Contributions...



We love to hear from you. Please send any articles & news to: editorhullavingtonnews@gmail.com. We reserve the right to edit any article. Please send in a Word file with a font of 12 and pictures/logos etc in jpeg. Pictures are printed in black and white.



New deadline for the next issue is the 17th July 2023.

With regret late submissions will not be included in the newsletter!

ADVERTISE
YOUR
BUSINESS
HERE



£65 per page for 6 issues a year and £35 per half-page (black & white).

All payments to Liz Greenman, address below.

Email: julianandlizgreenman@gmail.com.



Donations are invaluable to the running of this newsletter, they can be made through the collection box in the village shop or sent to Liz Greenman, 84 The Street, Hullavington. SN14 6DU. Lloyds Chippenham. Sort 30 91 99, AC 'Hullavington News' No 03041845.



HN is printed by Jamprint—01249 823950
www.jamprint.co.uk

Printed on Carbon Captured paper + www.woodlandcarbon.co.uk



It's officially the summer and King Charles is officially our King!! Hoorah Hussar!!

Has everyone got their BBQs, suncream and parasols at the ready for a flaming June after a somewhat sketchy spring, weather wise? I'm putting up my pool in slight trepidation this year, and that's not to including the headache that is the battle against the algae, bugs and burning skin with an unsafe quantity of chlorine! (- suggestions to the editor on that one!)

In this edition we have a new mind your own business from local couple at 'Marlin Mechanical' on page 32 and a brilliant history spot from regular Graham McDougal on page 26. There's another recipe and restaurant review on the 'sweet & savoury' on page 16 and of course the quiz-queen has done it again on page 22!

We've sadly come to the end of the 'then and nows' after several brilliant years of comparisons kindly compiled and written by David Hunt, so we've shaken things up a bit and added a 'past times' inspired by a handwritten letter received 'to the editor' from Joan Lindsey on page 55. And David has kindly written a brilliant meet the villager/past times hybrid for us on page 53 so get comfy, get a cup of tea (or even a pint if you're reading this at the Tap) and have a good 'ole read!!

Well that's all from me and the team until August - *please* keep sending in your news, views (and shoes if you must) because without your input I have nothing to *output* and the newsletter will simply cease to be.

Abi Elliott-Williams, Editor
And the whole editorial team

*All ideas, village news, views, information or photos you feel should, would and could be included in the next issue, please send them with a clear title in the subject line to: **editorhullavingtonnews@gmail.com***

Hullavington News can be picked up at the Village Shop and Post office, Village Hall foyer, Queens Head bus stop and also at the 'Tap' so you can enjoy it over a pint or coffee if you like! Don't forget to take an extra copy for any less abled neighbours you might have.



Carol Plumridge OSTEOPATHY

- For improved flexibility and stamina.
- Better sleep and decreased stress.
- Stiff back or joints; arthritis or disc problems, headaches or sciatica.
- Persistent Pain issues.
- 40 years + experience
- Free 15-minute consultations.
- For Solutions call or book online

@Active Potential Therapy, 9 Cavalier Court Bumpers Farm Chippenham SN14 6LH

www.carolplumridgeosteopathy.co.uk

01249 445426



PIANO LESSONS

JENNIFER J. TIDMARSH ATM (SMTc) FISM

12, The Street, Hullavington, Chippenham, Wilts. SN14 6EF

Very well established Piano Teacher

Children from the age of six, teenagers and adults all welcome

Lessons in Theory of Music also available

Telephone **01666 837264** Mobile **07814103077**

Member of the Independent Society of Musicians

THE CAKE TIN



We are a new & independent cake shop based in Malmesbury, High Street, Wiltshire.



Baking & decoration supplies.



Fresh cupcakes baked & available daily.



Celebration cake & cupcake orders.



Cake decoration workshops & parties for all ages.

Pop in and see us or simply visit our website or facebook group.

THE CAKE TIN

5 High Street, Malmesbury, Wiltshire SN16 9AA

• Visit: www.thecaketinshop.co.uk • Call: 01666 238 050 • Email: thecaketinshop@outlook.com



plumbing and heating

Boiler Servicing, Repairs & System Maintenance

Annual servicing helps to extend the life of your boiler & heating systems so avoiding inconvenient repairs

Contact us for servicing Gas, LPG & Oil Fired appliances



TELEPHONE
01666 503632

EMAIL
info@indplumbingandheating.co.uk

WEBSITE
www.indplumbingandheating.co.uk

Livery Available Norton



Various and different livery packages available from DIY upwards in quiet, rural location. Whether you are wanting a base to compete from, somewhere to enjoy a quiet hack or a base to hunt from, this yard offers it all!

- * Large, airy stables
- * Plenty of storage space
- * Parking for lorry / trailer
- * Floodlit fenced outdoor arena
- * Individual paddocks with all year-round turnout
- * Excellent hacking including off-road tracks
- * Secure tack room with CCTV
- * Undercover horse walker

Perfect location for various and different equestrian competition and schooling venues with good access to the M4 and A429

All set in a beautiful, peaceful location in the heart of the Duke of Beaufort's hunting area. Call Mary Cundick on: 07867804456

A BOWERS GARDENING SERVICES

ALL ASPECTS OF GARDENING

ALL TYPES OF FENCING

TREE SURGERY

PATIOS

NEW LAWNS LAID

RUBBISH CLEARANCE

FREE ESTIMATES & ADVICE WITH NO OBLIGATION

For quality jobs at a competitive price call:

PHONE: 0800 4748526

MOBILE: 07879 874627

The Orchard, Frog Lane, Great Somerford, Wilts SN15 5JA

Anna Durrant Photography



Family portraits taken in your own home or out at one of your favourite spots.

Passport pictures taken here in Hullavington - you might even get a nice one! £10

Wedding photography

www.annadurrantphotography.co.uk

07816 304904

Primary Makeovers

Property Services



**Call Paul on:
Kington St Michael**



ALL TYPES OF

**Decorating
Wallpapering
Tiling**

General Maintenance

01666 837471

07743 889017

ALL TYPES OF

**Plastering
Artexing
Fencing**

PVCu Fascias and Guttering



Little Hoots Nursery Class at Hullavington CofE Primary and Nursery School

Little Hoots is a maintained Nursery Class for 2 to 4 year olds at Hullavington Primary School.

The class is led by a fully qualified, experienced Teacher.

At Little Hoots each day is full of learning, play, fun, and new discoveries.

We have our own Early Years Classroom and enclosed purpose built Outdoor Learning Area.

- We offer Morning, Afternoon and Full School Day Sessions to match the school day (Term Time Only)
- We accept Early Education Funding (2 Year Old Entitlement, Universal 1.5 hours & Extended 3.0 Hours).
- All 3 and 4 year olds are entitled to 1.5 hours funding from the term after their 3rd birthday.
- Self-Funded Places also available.

To book a visit please contact the School Office on admin@hullavington.wilts.sch.uk or 01666 837604



HULLAVINGTON GARAGE AND STORES

TEL: 01666 837279

Hullavingtonmotors@gmail.com



GARAGE

- MOT TESTIING (class 4 only)
- MANUFACTURER RECOMMENDED SERVICE AND REPAIRS
- CAM BELTS
- TYRES
- EXHAUSTS
- BATTERIES
- DIAGNOSTICS
- VEHICLE ACCESSORIES
- CALOR GAS

OPENING TIMES

MON-FRI 08.30-17.00
SAT—BY APPOINTMENT
SUN—CLOSED

CONVENIENCE STORE

- OFF LICENCE
- NATIONAL LOTTERY AND SCRATCH CARDS
- NEWSPAPERS & GREETING CARDS
- GROCERIES & FRUIT AND VEG.
- CONFECTIONERY & ICE CREAM
- FROZEN FOOD
- CHILLED FOOD
- LOCAL BREAD
- LOCAL HONEY & EGGS

* SPECIAL ORDERS WELCOME *

OPENING TIMES

MON—FRI 08.00-18.00
SAT—08.30-16.00
SUN—09.00-13.00



OUR NEW AND FULLY EQUIPPED TYRE BAY IS NOW UP & RUNNING

- PUNCTURE REPAIRS
- REPLACEMENTS
- BALANCING
- FITTING



01666 837028
info@m4-tyres.co.uk
M4-tyres.co.uk

Based at the M4 Karting Hanger

Chris' Interior Blinds

**Made-to-measure blinds, supplied and
fitted for FREE**

**01666 510 557
07899 741 802**

*Roman, roller, venetian, pleated, woods,
vertical, curtains, perfect fit.*

Blind/curtain repair and fitting service also
available—just call.



THE HEAT is ON

Heating Company Ltd

Our services include

- ✓ OIL NATURAL GAS AND LPG
- ✓ SERVICING
- ✓ NEW INSTALLATIONS
- ✓ SYSTEM UPGRADES
- ✓ SMART ENERGY CONTROLS
- ✓ POWER FLUSH



✉ info@theheatisonheating.co.uk

☎ 07703 814 869 ☎ 01666 837 492

🌐 theheatisonheating.co.uk



Clapcote Forestry

Established 1981

Supplier of best quality Hard-wood LOGS

Cut and split to your requirements

*

Kiln dried logs available seasonally

*

Deliveries or CASH & CARRY

*

KINDLING

*

Telephone: Norman & Diana Matthews

01666 837230

Clapcote Hill, Grittleton SN14 6AS

dimatthews@me.com

CLAPCOTE SAWMILL

Specialising in:

Oak, Larch, Douglas Fir & all native hard and soft woods

For beams, lintels, planks & cladding

*

Bespoke Oak Framing Service

Timber frames made to order

*

Visit our yard between Grittleton & Hullavington to discuss your requirements.

ELLY'S SPA BOUTIQUE

Mobile Beauty Treatments

Let me bring the Spa to your home

I'm Elly, an experienced fully insured, mobile aesthetic therapist and member of the CTHC & FHT Associations—bringing salon quality treatments in the comfort of your own location (home, Airbnb, hotel). Treatments and procedures include:

*** Reflexology * Massage * Facials * Manicure * Pedicure**
*** Prosecco Pamper Parties**



www.ellyspaboutique.co.uk

Mobile 07435 920548



Covering Sherston and surrounding areas (approx 10 miles)

Gift Vouchers Available Online!

Use HULL5 for a £5 DISCOUNT

(1 per person, cannot be combined with another offer)



AXFORD

GARDEN SERVICES

GARDENERS AND LANDSCAPERS

**ROUTINE GARDEN MAINTENANCE, RESCUES,
MAKE-OVERS AND NEW PROJECTS**

01225 783344 | 07970 008810
www.axfordgardenservices.com



S COURT PLUMBING

07714171469

WWW.SCOURTPLUMBING.CO.UK



WE SPECIALISE IN BOILER AND BATHROOM
INSTALLS, PLEASE VISIT OUR FACEBOOK PAGE
TO SEE MANY OF OUR INSTALLS AND HEAR
FROM OUR HAPPY CUSTOMERS.

VILLAGE LIFE GROUPS, EVENTS, NEWS & VIEWS

Hullavington Celebrates the Coronation of King Charles III



St Mary Magdalene Church

The Coronation Weekend started at church with the Friday Coffee Shop with a full church and lots



of people enjoying coffee/tea

and cake. They were joined by members of our Little Lights group and their parents.

Sunday saw a well attended Coronation Celebration Service followed by a special tree planting with Helen Davies taking the service. The tree was plant-



ed by junior members of the church ably assisted by many Parishioners who helped fill in the hole. The tree chosen was an Ilex Golden King, a non prickly holly.



Holiday Monday saw the Coronation Hub take place in church with lots of people celebrating

the Coronation together. Coffee and cake followed by lunch was the order of the day, and lunch included Coronation Chicken (of course) plus the new Coronation Quiche created by one of Buckingham Palace Chefs. The usual soup, sausage rolls etc. we're also on the menu.

Other news from church - the fundraiser for Brain Tumour Research raised a fantastic £580 so a huge 'thank you' to everyone from the village who contributed.



Eaton Close Party

We had 3 special guests at the Eton close/Royal Field close party. They graced one of the tables all afternoon. They were made by Toni Anne.





Coronation Day Arrivals!



... Hullavington Book Group won a box of Vegan Chocolates from 'Buttermilk' for lockdown efforts!

The group was nominated by a member for their efforts to keep reading during lockdown 2021 with the 'Library Pony' and the book 'Giver of Stars' by Jo-Jo Moyes which catapulted them to fame in



both local and national television and papers. 'Buttermilk' were so impressed they sent a box full of their tastiest vegan chocolate bars for the group to enjoy with their next read!

... And for World Book Night

The group of reading stalwarts gathered around the Watts Lane bus stop to celebrate World Book Night on Sunday 23rd April. We managed to generate some warmth and laughter despite very un-April like weather.



Conversation ranged from books to the dam-busters (Film group extra's offering in May to commemorate the 80th Anniversary of the raid) through

lack of phone signal in the village (did anyone get the alarm call?) and would it matter if we didn't?

A very convivial little gathering warmed by tea and excellent cake, thank you Elizabeth and Emma.

It is a part of what makes village living so precious; a disparate group of people connecting over books and enjoying a slightly absurd situation on a cool damp Sunday evening

Thank you, Elizabeth, for suggesting it.



If you have any stories and photographs of village events you have organised or attended please send to editorhullavingtonnews@gmail.com and we can then add them next time!



SWEET and SAVOURY



ALMOND & LEMON CURD BUTTON BISCUITS

Makes approx. 20 shortbread biscuits. Can be frozen unbaked but add 5 mins to cooking time.

Ingredients

250g/9oz softened butter
140g/5oz golden caster sugar
1 egg
1 tsp vanilla extract
Zest 2 lemons
300g/10oz plain flour
100g/4oz ground almonds
A little milk to seal
Approx. 3 tbsp lemon curd
Flaked almonds for the top



Method

Heat oven to 190C/fan 170C/gas 5.
Beat together butter, sugar, egg, vanilla, zest and pinch of salt until smooth.
Fold in flour, ground almonds and shape into 2 rounds.
Cover in cling film and chill until firm. Approx. 30 mins.
Roll out 1 piece on a floured surface to about £1 thickness.
Stamp out rounds with 7cm cutter
Brush all over with milk and add a 20p blob of lemon curd to centre of half of the rounds.
Carefully top each with remaining rounds, and gently press edges with your fingers to seal.
Scatter with a little caster sugar and the flaked almonds.
Repeat with remaining pastry and squish together any off cuts and re-roll
Bake for 15 mins until golden.



The Rattlebone—Sherston

The Rattlebone in Sherston is a wonderful village pub. Despite its previous association with Prince Harry this pub retains its warm, homely and relaxed style. It is always busy but not overcrowded, however booking is highly recommended. Having made this pub one of our regular haunts we have never been disappointed. The beer is always popular as it features draft Flying Monk and the wine selection also suits most pallets.

The food is a great mix of pub classics, pie, burger etc. but also more adventurous fair such as venison, pork belly or monkfish. All are beautifully cooked and presented. As the menu does change quite regularly it is worth checking out the website to see the latest version.

It is also worth noting that The Rattlebone has a Tuesday Steak night and a full and varied lunch menu.

The prices are very competitive with other pubs so please give it a whirl I know you will not be disappointed. www.therattlebone.co.uk

Members enjoyed January's meeting when we were given a bird's eye view of an investiture. It was fascinating to learn what really goes on behind the scenes, told to us by Sue Roberts who received her CBE from the queen.

Our talk in April about the building of Box tunnel was very interesting and enjoyed by members and visitors from the village. We certainly learnt a lot about its impact on the area.

Also in April we went to the John Aubrey Group meeting to hear a talk about Shakespeare's women. This was a very interesting talk and afterwards we were able to chat with the members of the 6 other WIs in our group.

Our meeting in May is our birthday month when Hullavington WI will be 62 years old. The committee is organising a birthday tea and our speaker on this occasion is Anne Ewing who used to be a registrar and who will talk about some of the odd/amusing incidents when conducting marriage ceremonies.



In June Al Sylvester will be with us to talk about the 'Southern Reach', his adventures in Antarctica. This could be of great interest to husbands, partners and friends as Al is quite an explorer.



Our meeting in July is when a member of the TV Time Team crew will be with us to talk about the interesting digs they have had, some far away and some quite local. This too could appeal to the gentlemen so they are all invited.

We have just heard that our skittles team has reached the semi-finals of the Wiltshire WI skittles cup so we will be off to Melksham to compete against another team (we don't know who) to hopefully reach the finals. We all enjoy our skittles so we are looking forward to this match.

We hold our meetings on the 3rd Wednesday of each month at 2pm in the Village hall. New members and visitors are always welcome.



Councillors Questions

with Nick Botterill

It is around this time of year that I get a big increase in the number of enquiries from residents.

I have just completed the cycle of annual parish meetings and there are lots of concerns about the state of the roads. Last winter was very bad for the road surfaces, lots of rain followed often very quickly afterwards by sharp frosts – both designed to break up the surfaces many of which were not in a great state to start with. This

also followed a dry summer which had led to extra surface cracking. Result, many of our roads are covered in potholes. “Well Nick, what are you going to do about it?” I get asked.

Potholes can’t be easily filled during the winter as the tar can just wash away again. As the weather has been improving 6,000 potholes have been addressed, which is roughly double the rate of previous years. Teams are moving around the area doing as many repairs as they can before moving on. Where possible substantial repairs will be made i.e. a whole square of surface replaced, rather than just filling up a hole. If you come across a pothole or damaged section of tarmac and you think it may not have been reported, do use the MyWilts app where it will get formally logged (yes I know some of the automated responses are idiotic and that is something which the IT people are working on!) Alternatively take a photo and email me with the location and I can report it. Over a network totaling thousands of miles of roadway, it is often only by receiving such reports that a clear picture of where to concentrate the repair work can be formed.

Wiltshire Council will be spending all the £20 odd million this year which central government allocates to local road works. However the reality is that in order to get the network back to the sort of state it was in 10 or 20 years ago, additional sums are going to have to be found for planned resurfacing of longer sections of roads. Looking at finding this money and freeing it up for such works without putting additional financial strain on the council’s budgets is one of my tasks as cabinet member for finance.

Following quite a damp spring, the roadside verges are also extremely prolific this year. While visibility for road safety is a requirement, most other verges are mowed less frequently than in the past – usually just twice per year. This is in order to preserve bio-diversity; less cutting, and only at certain times of the year, has been shown to promote more diverse flora and fauna as well as potentially help with insect numbers. However if you are aware of any sections of verge which need addressing for safety reasons and which don’t seem to have received a cut recently, please let me know.

Cllr Nick Botterill – Wiltshire Councillor for By Brook division* Cabinet Member for Finance, Strategic Planning & Development Management

Nick@Botterill.org 0795 617 6255 - * includes Hullavington, Biddestone, Castle Combe, Grittleton, Nettleton, North Wraxall & Yatton Keynell

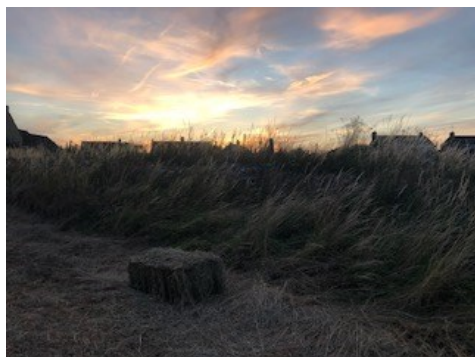


VILLAGE IMAGE

* EDITORS CHOICE *

We are a village full of many things (insert your own gag here if you like!) but brilliant amateur photographers is one of them and we'd love to share your fab photos with everyone!

Please send your photos of the wonderful, beautiful or just plain silly village scenes, events or oddities to the editors desk and maybe you'll be editors choice in next issue of Hullavington News!



This time it's the turn of
(drum roll please...)

MADELEINE ROWELL

Please ensure you have all the necessary permissions before you submit and don't forget to let us know all the names, places & faces so we can credit you all....



Letters to the EDITOR

Dear Mrs Lindsay

Thank you very much for your lovely letter – it will certainly make copy and bring a smile to everyone who reads it.

Thank you for sharing your lovely memories of our village.

Best wishes,

The Editor

"Dear Editor

Will this reminiscence make copy for H.N. I have no other means of reaching you than by handwriting and I hope it is legible.

Best wishes

Mrs J. Lindsay"

(letter continues on page 55)



HULLAVINGTON COMMUNITY GROUP UPDATES

The Hullavington Community Group was formed to share resources between what were (and still are) 5 major projects running within the community: -

- **POSH** who have been trying for the last number of years to improve the outdoor facilities for the whole community.
- **Community Fibre Partnership** - making sure we're not left behind as the rest of the country upgrades to Fibre Optic Cable.
- **The Wildlife Group** - working with outside agencies to bring the Gauze Brook back to life (amongst other things).

The Footpaths Group who both organise walks and work closely with Wiltshire Council to improve them, and the latest project to protect our access to the parishes **Rights of Way**

It is clear that the aspiration for many villagers is for better outdoor facilities so POSH via the Hullavington Community Group is asking for your help to take another shot at securing it...

If you are keen to see our outdoor facilities improve, please come and join us.

This isn't just about a park for the kids or a sports pitch, this is about securing community owned land that we can all use. How we use that space is a question for the whole village and It must start with the asking of a single question.

What do you want Hullavington to look like in 10 year's time?

Make your point of view heard.

Please join us at a meeting at 7.30pm

On 27th June in the Church

The **Annual Parish Meeting** - was held on the 13th of April in the church. Sadly, it wasn't very well publicised, but we aim to help the parish council remedy that next year as it would be a shame to lose this ancient tradition that has its origins in Medieval Times.

Below are a sample of the updates that were presented, more can be found in the meeting minutes on the parish council website.

Our Rights of Way - are any of them in danger?

Rights of Way, as you no doubt know, are routes that the public have a lawful right to use; they range in size from roads to footpaths.

The Rights of way network that we currently have, has been used for 100's of years, but it wasn't until the mid 1800's that footpaths appeared on maps at all, and even then, they were not officially documented.

That all changed in 1949 with "The National Parks and Access to the Countryside Act" requiring every County in England and Wales to carry out a survey of public paths and prepare a Definitive Map to document the correct routes.

Fast forward 61 years to 2000

"The Countryside and Rights of Way Act" had a small clause which stated that all Rights of Way must be properly documented prior to 2026 or lose their legal status, as it turns out that "quite a lot" of routes had not been properly documented.

There was such a huge number of applications the government agreed to alter the timeline and streamline the process.

The new deadline date of 2031 was announced approximately 4 weeks ago, and this may seem like a long way away, but once submitted the application to correct any mistakes takes on average 4 to 5 years.

One example is the missing section joining Hullavington to Stanton at Stock Wood.

We have started the process of checking our rights of way, so as to make sure none will be lost, and if you're interested helping us please email hullavingtoncommunitygroup@gmail.com

Fibre Optic Upgrade Progress

As you probably already know we (Hullavington and Norton) were able to restart the Community Fibre Partnership, which will see our telephony system being upgraded. Openreach had agreed to re-cost and give us a final offer, following our acceptance of this offer, it then had to pass through Openreach's internal governance process.

We're pleased to report that our application for government funding was submitted by Openreach to the BDUK at the Department of Culture Media and Sport on the 14th of March. Having waited its turn in the queue it is now being actively assessed (11th May).

hullavingtonsustainability2021@gmail.com

If you do not have or want internet access, please phone Sarah on 837917

Wildlife - (contact via Hullavington Wildlife Facebook page)

A few facts about the Gauze Brook and its wildlife: In the last 50 years, 38 million birds have vanished from UK skies, 97% of our wildflower meadows have been lost since the 1930s, and a quarter of all our mammals, including water voles and Greater mouse-eared bats, are at risk of extinction.

Locally, in the last 20 years, the water vole has become extinct on our own Gauze Brook.

There are two main monitoring activities underway: Helen Creighton walks the Brook and observes conditions and wildlife and reports back to Wiltshire Wildlife as a Water Guardian. Debbie, with her team of volunteers, monitors river fly species and reports back to the Environment Agency via Bristol Avon River Trust (BART). Both activities are part of the Citizen Science initiative.

The River Fly monitoring activity now has two sites. One downstream of the stream support and one downstream of the water treatment plant. Each gives very different results with the upstream site indicating a pretty sterile environment with frequent failure of achieving the trigger point but richer results downstream of the water plant. These results suggest a more hostile environment upstream, with a variety of potential causes including climate change, drought, wash from fields, erosion of bank shelter, stream as a drainage channel at points, too wide at others leading to sluggish flow and stagnation.

The Hullavington Wildlife Project is working with BART and Wessex Water, with the support of local landowners, to raise funds to make small but significant changes so we can start to reverse the issues with our stream.

The aim is to improve the Gauze Brook into the richer stream of 20 years ago and to reintroduce the lovely water vole and other creatures that were common in years.



Time to get the grey matter working with this issues' quiz from the puzzle queen at the HNHQ!

- (1) Which country has the highest life expectancy?
- (2) What is the commonest surname in the United States?
- (3) Queen guitarist Brian May is also an expert in what scientific field?
- (4) Which of Henry VIII's wives was born at Wolf Hall, Burbage, Wiltshire?
- (5) In what country would you find Mount Kilimanjaro?
- (6) What is a group of pandas called?
- (7) Who famously crossed the Alps with elephants on the way to war with the Romans?
- (8) What sports car company manufactures the 911?
- (9) What city is known as "The Eternal City"?
- (10) What character have both Robert Downey Jr. and Benedict Cumberbatch played?
- (11) What country has won the most World Cups?
- (12) Kratos is the main character of what video game series?
- (13) What famous historical document does Salisbury Cathedral hold a copy of?
- (14) When did RAF Hullavington first open?
- (15) How many White Chalk Horses are still visible in Wiltshire?
- (16) Native to the Caribbean, what sort of animal is the mountain chicken?
- (17) True or false: You can sneeze in your sleep?
- (18) Which European country has 158 verses to its national anthem?
- (19) What is Scooby Doo's full name?
- (20) How many locks are there at Caen Hill near Devizes?

Answers on page 26

HULLAVINGTON PARISH COUNCIL NEWS

Chair of the Parish Council Update

<http://www.hullavingtonparishcouncil.org.uk/>

A Message from the Chair - Hullavington Parish Council

Key messages were recently released via the Hullavington Parish Council Newsletter #1, http://www.hullavingtonparishcouncil.org.uk/Parish_Council_Newsletters_44882.aspx

I thought it best to reinforce some of those messages via this newsletter. A downloadable form is available on the website, please let us know how you would like to receive communications from your Parish Council, fill in a form and return by e-mail to the Clerk or myself at the address on the form.

There has been a rise in near-miss incidents but not necessarily reported to Wiltshire Council Highways. The TAP at Bradfield is proving to be very popular, and number of people are walking the C31 between the village and the TAP at Bradfield has increased. Should anyone have a near miss road traffic incident please report it via e-mail to northernhighways@wiltshire.gov.uk rather than My Wilts Reporting. The more reports that go in the greater the opportunity will be for your council to push for a speed reduction covering the C31 crossroads and Bradfield. Please remember, the roads around the village are dangerous, some are single track and very narrow, think before you walk, plan your route, **make sure you can always be seen**, even if that means you walk with the traffic coming from behind you at times.

Wiltshire Council have just completed a sweep through of the village. We can but keep an eye on things and request a periodic sweep through. Drains and gulley's the next target, no point in cleaning them out before the roads were swept. Some of the drains and gulley's can be cleared by the Parish Steward and others will require traffic control, the list is growing.

Please let us have your ideas for the Watts Lane Raised Garden, the walls have started to crack, your Parish Council cannot take a chance on when the wall will fall over and injure someone. Basic Ideas, rebuild the wall to the same height and backfill, or lower the wall and protect the area with a kerbing style surround and re plant etc. Please let us have your thoughts.



HULLAVINGTON BOOK GROUP

The group meets on the second Tuesday in the month, in the side room at the village hall, 2.00 pm, when we enjoy refreshments and lively discussion about a wide range of books.

March: 'The Enchanted April' by Elizabeth von Arnim

We decided to celebrate April, sunshine and wisteria, by reading the book during March/April, and also by showing the film version of the story. It was interesting to compare the two.

This 1922 novel was inspired by a month-long holiday on the Italian Riviera, and is probably the lightest of Elizabeth's novels. She set the book in the 15th century Castello Brown, which in the story becomes San Salvatore. Four dissimilar women leave 1920's rainy, grey London for a month long holiday in Italy.

At our April meeting, discussion was lively. We compared the lives of the four characters in the book with those of women today. Some liked the book, others were not so keen. The film was popular with most, it was beautifully to look at and had an excellent cast. The sunshine certainly cheered us.

Reviews:

'The film of The Enchanted April is a wonderful evocation of Elizabeth Von Arnim's book. She was a passionate gardener and it shows in her descriptions of the gardens at the castle where the ladies stayed. The film is brilliantly cast and evokes peace and relaxation which allows for the blossoming of all the characters.

If you've read the book you won't be disappointed by the film and vice versa.'

'The novel describes how four women (and their men) come together, for a month, in beautiful Portofino to somehow create a new family. It is a comedy of manners, of breaking down social barriers, of forging friendships and rekindling of forgotten love. The romantic setting of Italy and the description of the villa's garden as it goes through the fragrant floral changes is wonderfully captured by the author and it is this that makes the novel for me. The story line is perhaps now rather dated but the role of the woman in society thankfully shows us just how far we have come since the 1930's.

'I found The Enchanted April a very silly story! It was written in 1923 so set in a very different world to the one we live in today.'

The sentences were very long and often difficult to understand.

A story about four ladies who did not know each other and spent a month in a medieval castle in Italy. There is a film of the book which I haven't seen - I imagine this was highly amusing!

I found it all quite ridiculous - a bit like the play The Importance of Being Earnest but I kept expecting Basil Fawlty to make an appearance at the castle!

Got to love our book group - we read so many different genres!

April: 'Three Hours' by Rosamund Lupton

This gripping thriller was popular with most, although there were flaws in the story. A lovely afternoon talking about the book.

Reviews:

'Told from the perspective of the people at the heart of a 3 hour school hostage taking, I found the storyline all a bit chaotic. However, this was probably the intention of the author as an armed school siege is hardly likely to be a structured affair.

The novel jumps between the various groups being held which made it quite difficult to empathise with any of the relatively large character list.

I did enjoy the slow build up of atmosphere and suspense and it did become gripping by the end but over all I just couldn't find my way into the story and found part of it a bit clichéd.

A difficult novel to write given the number of school shootings that we have witnessed over the past few years and one I was not disappointed to come to an end.'

'Three Hours - a thriller of a novel. In covering such a short space of time, it resonates with McEwan's 'Saturday' but with radically different subjects. Three Hours covers a school siege in rural Somerset. It centres on beautifully described characters of Rafi, the Syrian immigrant and his young brother; Beth - and anxious Mum; Neil - the heroic headmaster; Hannah - locked down in the library and Rosie - the forensic psychologist. The tension builds over the course of the novel. It is hard to put down as Lupton's novel makes the reader worried for the characters. There are some predictable aspects to the plot but the twist at the end surprised me. Not a novel to read if you need a lift but very well written and holds the reader to the end assuming you can bear it.'

'I found things tied up a bit too quickly and neatly at the end However, I was quite taken with the Macbeth link and especially using Dunsinane woods to confuse/confound the enemy.'

'Three Hours is one of the very best books I have read.. not an easy read, but, considering it is about a hate crime, the writing made the positive qualities of the characters in the book so plausible that I ended up feeling better for having read it. I read it in three chunks, the third was part 3 which I realised I could not read at bedtime for fear of the outcome. I really cared about the outcome.

This is a book I may have to buy for myself... '

May: 'Sleep' by C L Taylor

Film of the Book evenings are held on the **first Wednesday** in the month, usually in the side room at the village hall. We realised the April and May films were going to be popular choices, so to allow for a larger audience, they were shown in the main hall. **'A Man Called Otto'**, starring Tom Hanks, was a big success when screened on Wednesday 3rd May. The film is based on the book 'A Man Called Ove' by Fredrick Backman, which the group read a few years ago.

Film of the book sessions have limited space, so seats need to be reserved.

If you would like information about the book group, or film of the book, please contact me on 01666 837713, email peac@globalnet.co.uk

Elizabeth

GRAHAM McDOUGAL'S'

HISTORY SPOT

THIS EDITION : JOHN AUBREY FRS (1626 – 1697)

S In the previous edition of Hullavington News the Hullavington WI mentioned that they are part of the John Aubrey group of local WI's. Who was John Aubrey and what was his connection with the area.

John Aubrey was born in 1626 in Easton Piers (Percy) near Kingston St Michael to a long established and affluent gentry family. He was initially schooled by Robert Latimer in Malmesbury where he met and befriended the famous English philosopher Thomas Hobbes.

Aubrey went on to discover the megalithic remains at Avebury. Much later the 'Aubrey holes' at Stonehenge were named after him. During his lifetime and afterwards he was recognised as being an important Antiquarian, pioneering archaeologist, natural philosopher and writer. He became a Fellow of the Royal Society in 1663 and included amongst his many friends the architect Sir Christopher Wren.

He was the author of several publications including Brief Lives. Before his death Aubrey wrote a biography of his friend Thomas Hobbes of Malmesbury. Unfortunately he lost family estate after estate due to love suits and lawsuits and finally had to part with his ancestral home at Easton Piers in 1670.

Most of his works were unpublished at his death however his manuscripts are now held in the Bodleian Library. Aubrey died in 1697 and is buried in the churchyard of St Mary Magdalen in Oxford.

John Aubrey was possibly the inventor of modern life writing and his name is remembered locally by the WI groups in the surrounding villages of Hullavington, Kingston St Michael ,Kington Langley, Pewsham and Chippenham itself.

Editorial Quiz - Answers

- | | |
|---------------------|------------------|
| 1. Hong Kong | 11. Brazil (5) |
| 2. Smith | 12. God of War |
| 3. Astrophysics | 13. Magna Carta |
| 4. Jane Seymour | 14. June 1937 |
| 5. Tanzania | 15. 8 |
| 6. An embarrassment | 16. A frog |
| 7. Hannibal | 17. False |
| 8. Porsche | 18. Greece |
| 9. Rome | 19. Scoobert Doo |
| 10. Sherlock Holmes | 20. 29 |



PARISH CHURCH OF ST MARY MAGDALENE

SERVICES FOR JUNE AND JULY 2023

JUNE

Sunday	4	11.00am	Holy Communion
Sunday	4	3.00pm	Group Service: Messy Church
Sunday	11	11.00am	Morning Praise (informal)
Sunday	18	11.00am	Holy Communion
Sunday	25	11.00am	Family Service

JULY

Sunday	2	11.00am	Group Service: Holy Communion
Sunday	2	3.00pm	Group Service: Messy Church
Sunday	9	11.00am	Morning Praise (informal)
Sunday	16	11.00am	Holy Communion
Sunday	23	11.00am	Family Service
Sunday	30	10.00am	Group Service

HOLY COMMUNION SERVICE: SUNDAY 2 JULY

Following her ordination on 1 July, we are delighted that the curate for the Gauzebrook Group of Churches, Sharon Glead, will be leading her first service of Holy Communion at St Mary Magdalene. Please do join us for the service and help to make this a truly memorable occasion.

COMING SOON...

In response to the growing success of the youth work of North Wiltshire Mission Area (NWMA), plans are in place to hold a monthly youth worship service in Hullavington for young people across the Gauzebrook Group.

The service will be a more contemporary form of worship and anyone interested in knowing more about this exciting new opportunity should contact jessica.price@nwma.org.uk



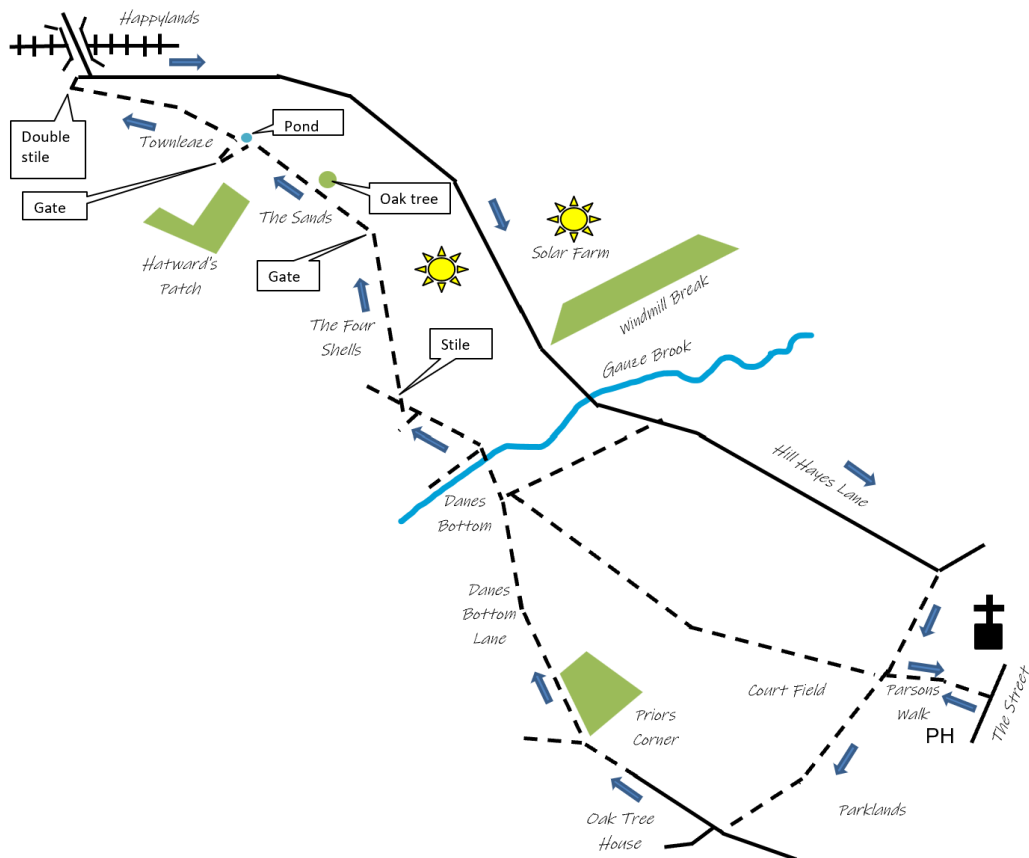
WALKS AROUND HULLAVINGTON by *Jon Atkey*

The village centre footpath network

Walk Two – Happylands Bridge – Distance: 3 miles

This month's selection from "Walks Around Hullavington" takes you down an ancient track to cross the Gauze Brook, over fields to the Happylands railway bridge and back along Hill Hayes Lane.

Go down Parsons Walk, which leaves The Street between the Hullavington Arms and the church almost opposite London House. Go through the kissing gate, cross the little stream and turn left as you enter Court Field and go along the field edge at



the back of Parklands. A stile at the end brings you out into Will (or Mill) Lane almost opposite the imposing gate pillars of Oak Tree House. Turn right and follow the lane past the little wood called Priors Corner (flooding here after heavy rain). Ignore the bridleway forking left and continue past Priors Corner down the stony track, Danes Bottom Lane.

At the end of Danes Bottom Lane, enter the field ahead and cross the Gauze Brook over the stone bridge. With the hedge and small tributary stream on your right, walk uphill for about 200 yards. Turn right over the stile by the gateway into a large triangular field, The Four Shells, and proceed more steeply uphill keeping to the right-hand hedge. At the top, you enter The Sands field through a gateway. Look for rabbits here – there's quite a colony and if you're lucky and quiet you might see a fox.

As you cross this field, passing to the left of the large oak tree to the pond in the right-hand corner, the small wood on the left is called Haywards Patch. Divert left for 50 yards to a gate to enter next field, Townleaze. Keeping to the hedge on your right, continue until you reach a double stile. Cross this to find the railway bridge to your right. Once in the lane, turn right and in about a mile you will be back in the village. As you descend the steep hill, note on your left Windmill Brake where pheasants are often bred and the bore hole by the Gauze Brook, which keeps the downstream stretches flowing freely when the upper reaches are dry.

As always, please remember to follow the Countryside Code and, in particular – Leave gates and property as you find them, or follow instructions on signs – Be nice, say hello, share the space – Follow the local signs and keep to marked paths – Take your litter home – Leave no trace of your visit – Always keep dogs under control and in sight – Dog poo: bag it and bin it – Enjoy your walk, have fun, make a memory.

The full set of ten walks is available on the Parish Council website. Compiled by John Greenwood and Alan Roberts in 1995, these ten walks provide an excellent introduction to our local footpaths: http://www.hullavingtonparishcouncil.org.uk/Walks_Around_Hullavington_31117.aspx

CONTINUED from 'Meet the Villager' on page 53

There is nothing I enjoy more than a leisurely walk round the footpaths of the village with my camera and with my friend Eric Gough just enjoying all that we see, hear and find in the Lord's creation no matter the time of year. We still feel quite proud that we discovered the 600 year old oak tree that is now recorded on the Woodland Trust web site.

I have always loved sport. For a few years I played cricket for Grittleton. For the past thirty years or so I have regularly watched Chippenham Town FC. It has given me much pleasure to watch them progress from the Western League, through the Southern Leagues, and now establish themselves in the National League South. There is something special about watching live football.

Margaret and I just love the village and have absolutely no regrets that we have spent all of our married life here. We would not change it if we could. If I could change one thing in the village it would be to have a decent play area and a playing field. Where do we go when my two grand sons want to play football? Living my life in this village and having a faith in the Lord Jesus has given me all the happiness I have needed.

A C R E

ESTATE MAINTENANCE

All types of maintenance around the house, home and garden

Tidying pruning, mowing , small hedge cutting, planting

External painting / creosoting, patio cleaning, gutter clearance

small plumbing jobs, tap washers, outside taps etc,

basic carpentry, shelves, log stores, door locks

kitchen cupboards, erecting sheds, fence repairs etc

electrical (16thed C&Gs Qualified)

fault rectification, new light fittings,

extra sockets, garden lights,

domestic cleaning services, pressure washing

flat pack furniture assembly

any job considered, small jobs our speciality

any job you don't know who to ask then try us!

Call Allan or Chris on

01666 837302, 07500340936

acremaintenance@gmail.com



Call now for a

FREE
Quotation

A Double Glazing Service that you can rely on...

- Heritage Cottage Windows
- Composite Doors
- Casement Windows
- Tilt and Turn Windows
- Vertical Sliders
- Patio Doors

 RESIDENCE 9

 **Solidor.**

rational
WINDOWS & DOORS

Truedor



Call us on **01666 840 042**
www.sharpeswindowsanddoors.co.uk



Mind Your Own Business

Want to know more about Hullavingtons' very own entrepreneurs and village based, run or born businesses? Well, read on McDuff, read on...

IN THIS EDITION :

Marlin Mechanical

We are a small family-run garden machinery business – husband, wife and labrador! – based in the yard of the Flying Monk Brewery at

Bradfield Farm. Back in 2020, Stewart started

working out of the old farm workshop as a sole trader. However, this year Jo has come on board, and we have taken the plunge to become a limited company!

It all started when Stewart was made redundant from his last job. While looking for the right job role, he put his experience as a heavy plant mechanic (and large collection of tools!) to use by doing a few mechanical 'odd' jobs in the local area. After being asked to fix a troublesome lawnmower and generator for someone, more and more garden machinery kept coming his way. This meant that his garage at home soon became far too small! Thankfully, we were lucky to be able to rent the old farm workshop at Bradfield Farm - a place where Stewart had his very first job after leaving school as a farm worker!

This year we have revamped our office and store to make it more welcoming, meaning it's much easier for people to spot us! And with Jo joining the business, we now have someone at the shop 7 days a week (seasonal hours will apply!) even when one of us needs to be out and about.

We offer service and repair of all powered garden equipment, from small chainsaws up to large ride-on mowers. We sell a great range of new equipment and some second hand. We supply garden machinery and agricultural spare parts to order as well as some welding supplies and gasses.

Any questions, come and have a natter as we always love to help, especially if it involves a chat!

IF YOU FANCY BEING THE NEXT 'MIND YOUR OWN BUSINESS' PLEASE EMAIL ADDRESS BELOW!



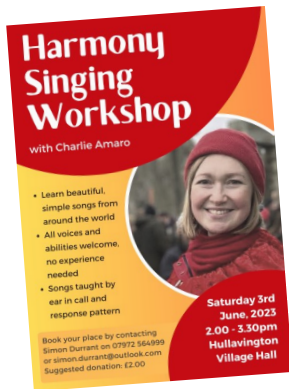
VILLAGE HALL NEWS

There is now in the hall car park a clothes recycling container, managed through Hullavington School HSA and raising funds for the school.

Please deposit your unwanted clothes, shoes and belts in bags in the container.

There are also separate bins for recycling;

- printer cartridges
- stationary items
- dental items
- used asthma inhalers



Charlie Amaro is back with another of her popular singing workshops on Saturday 3rd June

2pm - 3.30pm.

No experience needed, open to all abilities.

Suggested donation of £2.00

There is still some availability in the hall on Thursdays, Saturdays and Sunday mornings.

For more information about all the village hall activities and to book please see the website: <https://www.hullavingtonhall.org.uk>

Or contact Helen at helen@hullavingtonhall.org.uk

Or Lizzy at lizzy@hullavingtonhall.org.uk



Lending with Heart and Mind

Wiltshire Council fund a not-for-profit loan scheme for homeowners.*

If you have lived in your home for over 5 years and:

- **Are over 60; or**
- **Are in receipt of State Benefits; or**
- **Have children under 16 living with you.**

You may be eligible for a home improvement loan to keep your home warm, safe, and suitable for your needs.

Lendology CIC work in partnership with Wiltshire Council to deliver the council subsidised loan scheme. Our knowledgeable team of advisers will guide you through the process of applying.

To book a no-obligation assessment, or for more information, visit **www.lendology.org.uk** or call **01823 461099**.

Heatherton Park Studios, Bradford on Tone, Taunton, TA4 1EU

**subject to eligibility*

JUST HEATING LTD.CO.UK

Your Local Oil, Gas and LPG Central Heating Specialists

We are proud to employ a fantastic team of Gas Safe and OFTEC qualified engineers who are committed to providing great service.

Our reputation has been developed through hard work and reliability making us the number one choice.

- Boiler Servicing and Repairs
- Boiler and oil tank replacements
- Hot water cylinders and radiators
- Free no obligation quotes
- Up to 12 years warranty
- 0% Finance



01249 309 309
info@justheatingltd.co.uk
www.justheatingltd.co.uk

2 The Old Dairy
Charlton Park Estate
Malmesbury, Wiltshire
SN16 9DG

*T&C's apply



Proud members of
Checkatrade.com
Where reputation matters



smile

and let me take care of your holiday,
all you have to do is enjoy

Travel is my passion and with my knowledge and experience you can relax knowing you're in safe hands. I'm not constrained to 'business hours' so can be available at a time that's convenient for you.

There's a place in everyone's life for a little self-indulgence. Whether it be a cottage in the Lake District or a tailor made trip around India, I'll be there to make the planning and booking as stress free as possible.

From the minute you book, to the day you return home you'll only ever deal with me. With the peace of mind that everything you book is fully financially protected, why book with anyone else?

Book with confidence

- Fully Financially Protected
- Independent expert advice
- ABTA & ATOL bonded



Lynne Redfern

01225945899

lynne.redfern@hays-travel.co.uk

haystravel.co.uk/lynne-redfern

 Lynne Redfern at Hays Travel



Hays Travel

Bat and Chat

Hullavington Village Hall
Mondays 2-4pm from Feb 28th



Drop in Table Tennis for adults – just turn up and play. £2 per session (first taster session free)

Refreshments will be provided as will all equipment.

Not played for a while – or at all? Help will be on hand to get you started (or just come for a chat!).

For more information contact Anna on 07816 304904 or anna@hullavingtonhall.org.uk

OIL TANK NEED REPLACING?

Specialist Oil Tank Replacement

- Repairs & Maintenance Service
- Complete Installation Service
- Oil, Derv & Water Tanks
- Plastic & Metal Tanks
- Domestic / Commercial
- Agriculture



Call us for a Free Tank Inspection on

0800 622866 | 01672 841517

Email us on: info@kdtanksupplies.co.uk

Smithfield's Yard, Ogbourne St. George,
Marlborough, SN8 1SX

Family Business Est. Since 1987

kdtanksupplies.co.uk

KD TANK
SUPPLIES LTD

We have an expert and friendly team of lawyers to help with your individual requirements.

Whether you are **buying** and **selling property**, **need a will**, going through a **divorce** or need **legal advice** for your **business**. Batt Broadbent are the team to help you.

- Buying & Selling Property
- Making a Will
- Probate & Trusts
- Commercial Property
- Business Sales and Purchases

01249 479 303 | www.battbroadbent.co.uk
65 St Mary Street, Chippenham, Wiltshire, SN15 3JF



Introducing Sue Badminton:

Chartered Legal Executive at the Chippenham office.

Sue Badminton is a Chartered Legal Executive and has **over 20 years of experience**.

Sue has spent her **conveyancing career working in Malmesbury and Chippenham**. Her **local knowledge, expertise and efficiency** are well known in both of those areas and the surrounding villages.

If you are in need of a **trusted expert in conveyancing** then get in touch with Sue by calling the Chippenham office.

If you instruct us before you find a buyer we will reduce our legal fees by 10%.



Tuesdays 9:30—11:30

Hullavington Village Hall

We are a warm and friendly baby and toddler group
meeting every Tuesday during term time.

Great selection of toys for all ages,

Craft and messy fun,

Snacks for the children.

For the grown-ups: Tea, Coffee and Cake!

£2.50 per family or £1 for under 1's

Contacts: Rachel 07850 176901 or Anne 07811 036324



It all adds up +

*We look after your accounts
while you run your business*

Save yourself time, worry and money by using our friendly and helpful accountancy services. Accounts, tax calculation, VAT returns, bookkeeping and payroll management – we handle it all on your behalf.

Take advantage of fixed fee options as well as a low-cost start-up package for new businesses.

*“Friendly and flexible
accountancy for all types
of small business”*

For a **FREE** initial meeting to discuss your needs,
call **01666 824466** or visit **www.duncanjoyce.com**

duncanjoyce 
& associates chartered accountants





ACER TREE SURGEONS ARBORICULTURAL ASSOCIATION APPROVED CONTRACTOR

Acer Tree Surgeons Ltd are at the forefront of the Arboriculturally industry, with a huge range of skills and techniques, we are always able to deliver exceptional service to our clients. We currently have clients in both domestic and commercial sectors throughout Wiltshire, Somerset, Bath, Bristol and surrounding Counties.

The team are all NPTC qualified with chainsaw and maintenance CS30 & 31, aerial rescue CS38, climbing with a chainsaw CS39, pruning CS40 and dismantling operations CS41. We are all first aid at work and manual handling qualified.

Services include:

- Tree Removals, Dismantles and Felling
- Crown Reductions, Re-Shaping and Pruning
- Hedge Cutting
- Management of Dangerous Trees
- Stump Grinding and Removal
- Free Quotations and Tree Health Check

Contact Adam Marmora, DSc Arb ND Arb

Tel: 01666 718078 / 07843 082634

Email: adamroberts@acertreesurgeons.co.uk

Lucy Tom

INTERIORS

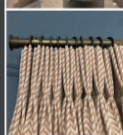
- Projects undertaken in all areas of interior design and styling
- Curtains and blinds handmade by our experienced team
- Extensive library of fabric pattern books
- In-house modern and traditional upholstery
- Box seat and scatter cushions
- Visit our shop for homewares, gifts, greetings cards *and much more!*



The on-site **Courtyard Café** serves

Espresso Coffee, Hot Chocolate, Herbal Teas, Home-made Cakes, Sandwiches and Toasties

Ask us about
INTERIOR SHUTTERS
from Shutter Frontier



DREAMSCAPE ELECTRICAL

Call Tony Parfrey
01666 837580
07815 932197

dreamscape.electrical@gmail.com
dreamscape-electrical.co.uk

Rewires / Fuse boxes
Extensions / New build
Security / Outdoor lighting
Fault finding
Testing and Inspection
Lighting / Sockets
Electric Vehicle Chargers





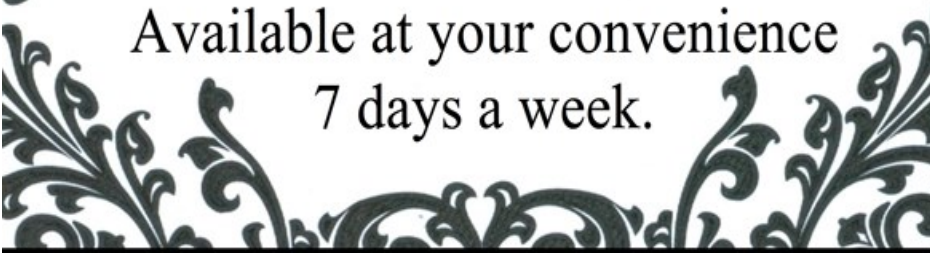
M.Vincent Windows & Glazing

For all your glazing needs

Wiltshire & Gloucestershire areas
Fast, friendly and efficient service

Call for your FREE quotation
07890 138453 / 01666 460106
enquiries@mvincentwindows.co.uk
www.mvincentwindows.co.uk

Available at your convenience
7 days a week.





Adam & Eve
Property Care

Gutter Cleaning
Hot Water Pressure Washing
Driveway & Patio Repairs



07546 781605 info@patioae.com
www.propertycareae.com



Community
Charity
Church



**10th
June
2023**



Hullavington Church Fête and Dog Show

Dog Show Classes and Agility;
BBQ; Cream Teas; Beer & Pimms Tent;
Fantastic Stalls; Children's games & races;
Tug of War; Raffle; Silent Auction; Bouncy Castle

**bring cash
(not card)
to spend**

When:

10 June 2023
1pm - 4pm

Where:

Court House, Hullavington, SN14 6DU
<https://w3w.co/toffee.purse.currently>

We need
your help

We would love donations of the following:

- Bottles (of any sort) for the Bottle Tombola
- New gifts or toys for Children's Tombola
- Plants and Garden produce
- Cakes and Baked goods
- Books and puzzles

Please deliver- all bottles, gifts and toys to London House or the Church w/c 8-28 May
- all baked goods and produce direct to Court House on 10 June.

Any queries please contact: 07375 306 881 admin@clubs4kids.com



Community
Charity
Church

Hullavington Dog Show Registration Form

**Each class costs £3 (or £5 for two classes)
to enter - registrations on the day**

Best Veteran (7yrs +) 1.30pm _____

sponsored by Chloe Adams McTimoney
Animal Chiropractor

Best Rescue 1.45pm _____

sponsored by Lucy Toms Interiors

Prettiest Girl 2pm _____

sponsored by Dotty4Paws

Handsomest Boy 2.15pm _____

sponsored by JustHeating

Waggiest Tail 2.45pm _____

sponsored by Sophie Grogan Pilates

Best Child Handler 3pm _____

sponsored by Ford Fuels

Dog the Judge would most like to take home 3.15pm _____

sponsored by Jam Print

Best in Show 3.30pm _____

sponsored by The George Veterinary Hospital

DOG AGILITY will be running from 1.30pm - £1 per go
sponsored by Sherston Boarding Kennels and Doggy Daycare

Terms of Entry:

Dogs must be kept on lead at all times and any mess cleared up
Owners are liable for their dog and must have public liability insurance
Judge's decision is final

Dodford Farm Daycare Nursery

We will offer your child:



- Full time childcare available from 07.30 to 18.00 Monday to Friday
- Four classrooms for children ranging from ages 0-5
- Experienced, well qualified staff with a high staff to child ratio
- A keyworker system for individual attention for your child
- Two large outdoor play areas and an indoor soft play and sensory room
- A wide variety of outdoor activities including farm walks
- All areas of learning in the foundation stage
- We accept Nursery Education Grant funding
- Plenty of parking available

**Please 'phone Kim Branston for details on
01249 891349**

dodfordfarmdaycare@outlook.com

**Dodford House Farm, Dodford Lane, Christian Malford,
Chippenham, SN15 4DE**



RATES FOR HIRING HULLAVINGINGTON VILLAGE HALL

Rates from 1st November 2021

Rate Minimum booking 1 hour	Small Room	Main Hall	Both Rooms	Kitchen (per booking)
VILLAGE USER – including all users who run clubs, regular events	£5.00	£8.00	£10.00	No fee
NON VILLAGE USER – one off bookings (not parties)	£8.00	£12.00	£15.00	£5.00
REGULAR/CORE/BUSINESS USER (who do not reside in Hillington)	£10.00	£15.00	£20.00	£5.00

PARTY BOOKINGS—will be on the basis of a 4 hour slot, giving time for setting up/ clearing away/cleaning. A deposit of £100 will be required. If more hours are required these will be charged at the appropriate hourly rate. The rate includes the use of tables, chairs and the kitchen.

PARTY BOOKINGS FOR 0-11 year olds

Rate—4 hours	Both Rooms	Kitchen (per booking)
VILLAGE USER	£50.00	included
NON VILLAGE USER	£65.00	included

For any queries, please contact:

Lizzy@hullavingtonhall.org.uk or helen@hullavingtonhall.org.uk



200 CLUB FOR THE VILLAGE HALL

This year we have been able to give the Village hall £1000 towards maintenance and updates. Thanks to all our members for your help in making this possible.

Congratulations to our recent winners

March £50 winner was David Hunt (138)
 £25 went to Bob Acott (25)

April £50 winner was Grace Smith (166)
 £25 winner was Miriam Flynn (79)



The draw now usually takes place on the last Friday of the month at the Church coffee morning. Do come along if you'd like to see the draw in action or ask any questions.

Last year we were able to give the Village Hall £1000 towards repairs and maintenance so its all in a good cause.

Or you can contact Linda Hadley on 837096 or Geraldine McKibbin 837736

Handy Information...

Shop opening hours:

Mon—Fri 08.00—18.00
Sat 08.30—16.00
Sun 09.00—13.00

Post Office opening hours:

Mon, Tues, Thurs 09.00—12.30
Wed 09.00—12.00
Fri—Sat Closed

Bat & chat table tennis	Anna Durrant	anna@hullavingtonhall.co.uk
Biodiversity	Debbie Lawley	debbie.lawley@willowdna.com
Book group	Liz Parry Williams	01666 837713
Fibre Optic		Hullavingtonsustainability2021@gmail.com
Film Group	Bob Fenner and P&E Parry-Williams	01666 837320 and 01666 837713
Football Club	James Nation	07894 715080
Footpath Group	Jon Atkey	jon.atkey@willowdna.com
Jolly Tots	Rachel Cripps	07850 176901
M'bury & District Link	-	01666 840861
N'hood Police Team		101
N'hood Watch mandy.hullavington.nhw.@gmail.com	Mandy House	07955 410350
Parish Church	Adam Beaumont	01666 311177
Parish Council	Sharon Neal	01249 659842 www.hullavingtonparishcouncil.org.uk
P.O.S.H Public Open space		poshfor2022@gmail.com
Primary School & Little Hoots Nursery	Matthew Slinn (acting head)	01666 837604
Recorder Group	Maggie Dyson	01666 837358
Rights of Way (roads)		0300 4560105
Knit & Natter (all crafts)	Sandra Samra	01666 838710
Short Mat Bowls	Pat Harper	07462 136889
200 Club	Geraldine McKibbin	01666 837736
Village Hall anna@hullavingtonhall.org.uk	Anna Durrant	01666 837569
Women's Institute	Isobel Acott	01666 837458





HULLAVINGTON FILM CLUB

Films are shown in the main hall on the fourth Wednesday in the month.

Only £3.00 for adults and £1.00 for under 18's.

Refreshments are Included!

Doors open at 7.00, the film starts at 7.30.

There is no requirement to book.

Attendance numbers have increased over the last few months to the very healthy 20's, with quite a few new people joining us. It is lovely to see everyone enjoying these evenings.

Your support is much appreciated.

On the 26th April we screened **LIVING**, starring Bill Nighy. This proved to be a very popular choice.

Having watched and enjoyed '**Empire of Light**' in the side room, those who attended thought the film deserved a larger audience, so we screened it again in the main hall as a film group EXTRA on the 19th April. 20 people attended, the film was very well received.

The dates for the film group evenings for June and July are:

Wednesday 28th June

Wednesday 26th July

Titles to be confirmed. Details will be found nearer the time on 'Hullavington Happenings', 'hullavingtonupdate' and on posters.

If you would like information about film group, please contact Bob Fenner tel: 01666 837320 or Peter and Elizabeth Parry-Williams tel: 01666 837713

Film Group EXTRA

Evenings are held on the third Wednesday in the month, in the side room. Due to space, there is limited seating, if you are interested in attending these sessions, please contact us.

For information about films, please contact Bob Fenner tel: 01666 837320 or Peter and Elizabeth Parry-Williams tel: 01666 837713



Meet the Villager....

A light hearted chat with a local about their time in Hullavington... lets meet...



.... David Hunt (of the brilliant 'then & now's)

I have lived in the village for 54 years. I grew up on the Isle of Wight but in 1961 came to Chippenham to Westinghouse Brake and Signal Company to do a Student Engineering Apprenticeship. I remained with the Company on completion of my apprenticeship and in 1966 met Margaret who also worked at Westinghouse. We married in Chippenham in May 1969.

In February of that year we realised that we needed somewhere to live after our marriage and so went into an estate office in Chippenham. I seem to remember that we felt we wanted to live outside of Chippenham and so we were advised that there was a semi-detached house in Hullavington that was being built and should be complete in a couple of months or so. We came out to Hullavington, which was probably my first visit to the village, looked at the house and decided it was for us. We have never regretted it. We paid the grand sum of £3780 for the house. We moved into the house a week after our wedding. We had a bed and bedroom furniture which was a wedding present from my parents and downstairs we had a cooker and a borrowed table and two chairs. A neighbour quickly loaned us two comfortable easy chairs and we had a radio. As the years followed we slowly furnished the house.

Our first son Michael was born in 1973 and was followed by Stephen in 1975. They both attended the village school and then Malmesbury. Although neither lives in Hullavington now they both say what a happy childhood they had growing up in the village. They enjoyed the freedom to roam the countryside around the village and I must admit we never felt any concerns. Yes, Steve fell into the Gauze Brook once or twice, but Mike was usually to be found on the school playing field playing football and cricket.

In 1978 I attended my first Hullavington School Parents Association meeting. It was the AGM and at the end of it I found I was Chairman! I enjoyed my years working with the Association, not all as Chairman, first when the head master was Jeff Burgess and then Graham Priest. I am still in touch with Graham today. Margaret and I were members of Mount Zion Church and from the early 1980s the church began to meet in the village hall. In 1986 I joined the Village Hall Management Committee as the representative for Mount Zion and so began a thirty five year period on that committee.

I thoroughly enjoyed my working life at Westinghouse but that sadly ended in redundancy in 1999. However, I found employment with Securicor Information Systems at Marshfield and had eight happy years there leading up to retirement in 2008. The whole of the time I was at Westinghouse I shared transport from the village and particularly enjoyed the years sharing with Eric Gough, Alan Roberts, Bill Mathews and Malcolm Mace.

Equally I have enjoyed retirement and soon realised the truth of the statement 'how did I have time to go to work'. We have been blessed with two grand sons, Toby in 2008 and Oliver in 2010, and we did our share in looking after them one day a week before school age, then collecting them from Junior School on a Wednesday, and even though they are both at senior school now, we still meet them in Nero's Coffee shop after school on a Wednesday.

I have always loved photography and rarely go anywhere without my camera. I have particularly enjoyed photographing the trains through the area over the past fifty years and also the changing village itself. For many years I took slide photographs but eventually in 2005 bought my first digital camera. I was reluctant to change at the time but now I enjoy the freedom to take as many photos as I like and have immediate access to them.

CONTINUES ON PAGE 29



Hullavington Short Mat Bowls

MONDAYS 19.30hrs - 21.30hrs

At Hullavington Hall



LOOKING FOR NEW MEMBERS All ages welcome

Join one of Hullavington's oldest Clubs.

*Come and learn a new skill, gently exercise
and make new friends.*

All you need is indoor flat bottom shoes or slippers

For more information please contact Pat Harper (Secretary) 07462 136889

The Chippenham Dog Walker and Pet Care Service

(also covering the surrounding villages, with
many Hullavington based clients)



Holiday Cover / Pet Sitting for cats & other small household pets

As an alternative to catteries, cats (and other small household pets) can be cared for and can stay in the comfort of their own homes whilst their "humans" are away. Thus, maintaining familiar routines and surroundings for them.

We operate **365 days of the year INCLUDING CHRISTMAS DAY!**

Feeding, supplying fresh water, issue of medication, litter tray maintenance, cuddles and play!
Plus any other reasonable request.

Tel or SMS: 07813 829359 (Rich Tidmarsh)

Email thechippenhamdogwalker@yahoo.com

Or find us on facebook



PAST TIMES by *Various Villagers*

THERE ARE MANY LOVELY VILLAGERS WHO HAVE SOME WONDERFUL MEMORIES FROM TIMES GONE BY, SOME MORE RECENT THAN OTHERS BUT ALL IMPORTANT TO BE RECORDED FOR FUTURE GENERATIONS AND ENJOYED BY US RIGHT NOW!

Our first was delivered, hand written and through the letter box by Joan Lindsey....

" When reading 'parish news' recently, I saw that over in Stanton St Quintin they had been invited to our church to see if the outside space could be made more wildlife friendly. May I share with you a memory that will always be with me from my early time in Hullavington....

When walking past the churchyard one early summer evening, the lowering sun was illuminating the many wild flowers and grasses, highlighting all the flying, fluttering buzzing creatures over and around them along with the birds that came to feed, it was a truly beautiful scene, the churchyard was alive.



At that time the Churchyard and parsons walk were kept in order and flowerful by Mr Charlie Tanner and Mr Nick Neal using hand tools (Mrs Neal Laundered and blue starched the white altar linen and polished the pews) From the snowdrops in the Meredith Brown

corner to the last hoary plantain in late summer there were always many wild flowers with their delightful names. The growth was cut after seeding, cleared up when nature took over for the winter until the snowdrops returned and the cycle begins again. It never looked untidy, just natural. Perhaps the wildflowers are still there waiting for some encouragement to bloom again"



HULLAVINGTON WHATS ON...

JUNE

- **Stay Fit with Emma** (every Thursday) — 1st, 8th, 15th, 22nd & 29th. Village Hall. 2-3pm. Fun, exercise to music for the over 60's (seated or standing) £7 PAYG or £30 for 5-week term (try first week free!). Emma Taylor, 07968 814965
- **Coffee Shop** (every Friday) - 2nd, 9th, 16th, 23rd & 30th. Village Church. 10-12pm. Tea, coffee and cake —just drop in!
- **Church Hub** - 3rd. Village Church. 11-1pm. Light lunches and refreshments—Just drop in!
- **Singing Workshop** - 3rd. Village Hall 2-3:30pm. Suggested donation £2. No experience needed and all voices and abilities welcome. To book, call 07972 564999 or Simon.durrant@outlook.com.
- **Knit & Chat Group** (every Tuesday) - 6th, 13th, 20th & 27th. Village Hall, 2pm—4pm. £2 includes refreshments. Bring along any craft you like, it does not have to be knitting. We have spare wool and needles if you want to learn knitting.
- **Film of the book**—7th. Village Hall. 7:30pm. £3. Refreshments included
- **Church Fete & Dog Show** - 10th. Court House, Hullavington 1– 4pm. Dog show running from 1:30pm, £3 per class or 2 £5. & Dog agility from 1pm and just £1 a go! PLEASE BRING CASH!
- **Book Group**—13th. Village Hall 2pm. £2 per person, per session. Refreshments included
- **Film Group EXTRA**—21st. Village Hall. 7:30pm. £3. Refreshments included
- **Film Club**—28th. Village Hall. £3.00 for adults and £1.00 for under 18's. This includes refreshments. Doors open at 7.00, the film starts at 7.30. There is no requirement to book.

JULY

- **Church Hub** - 1st . Village Church. 11-1pm. Light lunches and refreshments—Just drop in!
- **Knit & Chat Group** (every Tuesday)— 4th, 11th, 18th & 25th. Village Hall, 2pm—4pm. £2 includes refreshments. Bring along any craft you like, it does not have to be knitting. We have spare wool and needles if you want to learn knitting.
- **Film of the book**—5th. Village Hall. 7:30pm. £3. Refreshments included
- **Stay Fit with Emma** every Thursday)— 6th, 13th, 20th & 27th. Village Hall. 2-3pm. Fun, exercise to music for the over 60's (seated or standing) £7 PAYG or £30 for 5-week term (try first week free!). Emma Taylor, 07968 814965
- **Coffee Shop** (every Friday) - 7th, 14th, 21st & 28th. Village Church. 10-12pm. Tea, coffee and cake —just drop in!
- **Book Group** 11th. Village Hall. 2pm £2 per person, per session. Refreshments included
- **Film Group EXTRA** 19th. Village Hall. 7:30pm. £3. Refreshments included
- **Film Club**—26th. Village Hall. £3.00 for adults and £1.00 for under 18's. This includes refreshments. Doors open at 7.00, the film starts at 7.30. There is no requirement to book.

IF YOU HAVE ANY HULLAVINGTON BASED EVENTS, CLUBS OR GROUPS YOU WOULD LIKE TO FEATURE HERE **FOR FREE**, PLEASE EMAIL THE EDITOR AT THE ADDRESS BELOW