

# HULLAVINGTON NEWS



*In this issue:*

*Village Show Classes*

*Co-ordinated Covid-19 Community Response*

**April—May 2020**

*Free to every household*

# [ In this issue ]

02) Contributions

03) Editorial

16) Village Life

30) Covid-19 response

34) Favourite Recipe

60) 200 Club 61) Useful Contacts

62) Meet the Villager

64) Weekly Events & Coming Soon

# [ Contributions ]



We love to hear from you. Please send any articles & news to: [editorhullavingtonnews@gmail.com](mailto:editorhullavingtonnews@gmail.com) or deliver to The Old Bakery, 1 Gibbs Lane. We reserve the right to edit any article. Please send in a Word file with a font of 12 and pictures/logos etc in jpeg. Pictures are printed in black and white.



Input deadline for the next issue is the 10th May.



£65 per page for 6 issues a year and £35 per half-page (black & white). All payments to Liz Greenman, address below.



We're good value for money and distribute to approx. 500 houses!



Donations are invaluable to the running of this newsletter, they can be made through the collection box in the village shop or sent to Liz Greenman, 84 The Street, Hullavington. SN14 6DU. Lloyds Chippenham. Sort 30 91 99, AC 03041845



HN is printed by Jamprint—01249 823950  
[www.jamprint.co.uk](http://www.jamprint.co.uk)

Printed on Carbon Captured paper + [www.woodlandcarbon.co.uk](http://www.woodlandcarbon.co.uk)

What a strange period of time it's been—we've said 'goodbye' to some lovely Village characters, we've endured storms Denis, Ciara and Jorge. We've sympathised with those affected by the Australian Bush Fires, some have experienced the Corona Virus first-hand — I'm sure all of us have been affected in some way; as always, however, we see selfless people in the Village offering help to each other and the wider community and doing what they can to keep the plates spinning. It's very heartening!

Despite the doom and gloom, the lovely minutiae of Village life continues and there is plenty of good news. We have the draft schedule of the Village Show in this edition to whet our appetite and hopefully encourage us to plant, paint, create and bake. It will take place on the 29th August—I hope it will be as well supported as last year.

We've got some new businesses advertising with us in this edition and some of our regulars have moved on. Thank you all for your business which is an invaluable part of our Magazine. Looking through the offerings, we seem to cover just about every trade and service one could need from flower growers to tutors and Estate Agents and everything in-between! I hope the News is a useful starting point to find quality trades and services locally.

*Sally Jeeves—Editor*



## **Carol Plumridge** OSTEOPATHY

- For improved flexibility and freedom of movement.
- Better sleep and decreased stress.
- Back and neck pain, sciatica, arthritis and disc issues.
- Clinics in Chippenham and Calne.
- Saturday morning appointments.
- Free 15-minute consultations.

@Active Potential Therapy, 9 Cavalier Court Bumpers Farm Chippenham SN14 6LH  
01249 445426/655088



### **PIANO LESSONS**

**JENNIFER J. TIDMARSH ATM (SMTc)**

12 The Street, Hullavington

Very well established Piano Teacher with over thirty-five  
year's experience.

Children from the age of six, teenagers and adults all welcome.

Lessons in Theory of Music also available  
Telephone 01666 837264. Mobile 07814 103077

Member of the Incorporated Society of Musicians.

# THE CAKE TIN



We are a new & independent cake shop based in Malmesbury, High Street, Wiltshire.



Baking & decoration supplies.



Fresh cupcakes baked & available daily.



Celebration cake & cupcake orders.



Cake decoration workshops & parties for all ages.

Pop in and see us or simply visit our website or facebook group.

## THE CAKE TIN

5 High Street, Malmesbury, Wiltshire SN16 9AA

• Visit: [www.thecaketinshop.co.uk](http://www.thecaketinshop.co.uk) • Call: 01666 238 050 • Email: [thecaketinshop@outlook.com](mailto:thecaketinshop@outlook.com)



**plumbing  
and heating**

YOUR LOCAL EXPERT

**call today  
01666  
503632**



**Design and installation of efficient gas  
and oil fired heating systems**

**Boiler replacement and system  
upgrade including power flushing**

**Oil and gas fired boiler servicing**

**Complete bathroom design  
and installation including adaptations for  
the elderly**

**Hard water treatment &  
drinking water filters**

**Leadwork & Fibreglass Roofing**

Alderton 4, Priory Park, Priory Industrial Estate,  
London Road, Tetbury, GL8 8HZ  
[www.indplumbingandheating.co.uk](http://www.indplumbingandheating.co.uk)



## Cottage Pie Flowers

Small, hand-scale grower supplying you with locally grown, seasonal cut flowers. Sustainably grown with no air miles! Offering single bunches through to supplying florists and weddings. Contact Ros at [www.cottagepieflowers.co.uk](http://www.cottagepieflowers.co.uk) or call 07770 846435

## A BOWERS GARDENING SERVICES

ALL ASPECTS OF GARDENING

ALL TYPES OF FENCING

TREE SURGERY

PATIOS

NEW LAWNS LAID

RUBBISH CLEARANCE

FREE ESTIMATES & ADVICE WITH NO OBLIGATION

For quality jobs at a competitive price call:

PHONE: 0800 4748526

MOBILE: 07879 874627

# Anna Durrant Photography



**Family portraits** taken in your own home or out at one of your favourite spots.

**Passport** pictures taken here in Hullavington - you might even get a nice one! £10

**Wedding** photography

[www.annadurrantphotography.co.uk](http://www.annadurrantphotography.co.uk)

01666 837569/07816 304904

## Primary Makeovers

### Property Services



**Call Paul on:  
Kington St Michael**



ALL TYPES OF

Decorating  
Wallpapering  
Tiling

General Maintenance

**01666 837471**

**07743 889017**

ALL TYPES OF

Plastering  
Artexing  
Fencing

PVCu Fascias and Guttering

# Hullavington CE Primary and Nursery School

(Voluntary Controlled)



**One Team  
Working together  
Learning Together  
Succeeding Together**

Hullavington CE Primary and Nursery School has a dedicated on site nursery learning environment. The Nursery has sessions available for funded 2-year olds (limited spaces) and preschool children (funding available from age of 3 years).

Our team, consisting of a qualified teacher and qualified childcare professionals, will be working together to help develop strong bonds with you and your child to enable them to reach their full potential. We believe that when our 'Little Hoots' feel at home in their learning environment they can be inspired to explore the world around them to maximise their learning and development.



Ours sessions run from Monday – Friday in accordance with school term times.

Morning session: 8.50 am – 11.50 am

Afternoon session: 11.50 am – 2.50 pm

To find out more, arrange a visit to the nursery or book your child's place, please contact:

**Hullavington C.E. Primary and Nursery School  
Hullavington, Chippenham, Wiltshire, SN14 6EF**

Telephone and fax: 01666 837604

Email: [admin@hullavington.wilts.sch.uk](mailto:admin@hullavington.wilts.sch.uk)

**Website: [www.hullavington.wilts.sch.uk](http://www.hullavington.wilts.sch.uk)**

# HULLAVINGTON GARAGE AND STORES

TEL: 01666 837279

Hullavingtonmotors@gmail.com



## **GARAGE**

- MOT TESTIING (class 4 only)
- MANUFACTURER RECOMMENDED SERVICE AND REPAIRS
- CAM BELTS
- TYRES
- EXHAUSTS
- BATTERIES
- DIAGNOSTICS
- VEHICLE ACCESSORIES
- CALOR GAS

## **OPENING TIMES**

MON-FRI 08.30-18.00

SAT—BY APPOINTMENT

SUN—CLOSED

## **CONVENIENCE STORE**

- OFF LICENCE
- NATIONAL LOTTERY AND SCRATCH CARDS
- NEWSPAPERS & GREETING CARDS
- GROCERIES & FRUIT AND VEG.
- CONFECTIONARY & ICE CREAM
- FROZEN FOOD
- CHILLED FOOD
- LOCAL BREAD
- LOCAL HONEY & EGGS

\* SPECIAL ORDERS WELCOME \*

## **OPENING TIMES**

MON—FRI 08.00-18.00

SAT—08.30-16.00

SUN—09.00-13.00

## **NOT KEEN ON BIG GYMS?**

Pineapple Fitness Studio welcomes all age groups for  
private gym use and/or  
Personal Training

Open from 6am to 10pm daily  
Kington Langley, Chippenham  
Mobile 07900 911209  
[www.pineapplefitness.co.uk](http://www.pineapplefitness.co.uk)

## **PINEAPPLE FITNESS STUDIO**

## **Chris' Interior Blinds**

**Made-to-measure blinds, supplied and  
fitted for FREE**

**01666 510 557  
07899 741 802**

*Roman, roller, venetian, pleated, woods,  
vertical, curtains, perfect fit.*

Blind/curtain repair and fitting service also  
available—just call.



# THE HEAT is ON

Heating Company Ltd

*Our services include*

- ✓ OIL NATURAL GAS AND LPG
- ✓ SERVICING
- ✓ NEW INSTALLATIONS
- ✓ SYSTEM UPGRADES
- ✓ SMART ENERGY CONTROLS
- ✓ POWER FLUSH



✉ [info@theheatisonheating.co.uk](mailto:info@theheatisonheating.co.uk)

☎ 07703 814 869 ☎ 01666 837 492

🌐 [theheatisonheating.co.uk](http://theheatisonheating.co.uk)



# Clapcote Forestry

Established 1981

## Supplier of best quality Hard-wood LOGS

Cut and split to your requirements

\*

Kiln dried logs available seasonally

\*

Deliveries or CASH & CARRY

\*

KINDLING

\*

Telephone: Norman & Diana Matthews

01666 837230

Clapcote Hill, Grittleton SN14 6AS

[dimatthews@me.com](mailto:dimatthews@me.com)

## CLAPCOTE SAWMILL

Specialising in:

**Oak, Larch, Douglas Fir & all native hard and soft woods**

For beams, lintels, planks & cladding

\*

## Bespoke Oak Framing Service

Timber frames made to order

\*

Visit our yard between Grittleton & Hullavington to discuss your requirements.



# ACRE

General property maintenance  
Garden maintenance  
and Handyman services

Any job considered,  
No job too small.

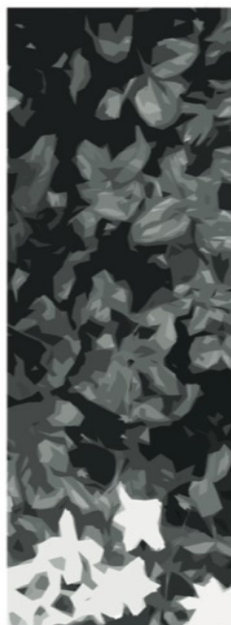
Friendly, reliable, trustworthy.

Allan Richings  
Gardners Drive  
Hullavington

[acremaintenance@gmail.com](mailto:acremaintenance@gmail.com)  
or phone

01666 837302

07500340936





# AXFORD

GARDEN SERVICES

## GARDENERS AND LANDSCAPERS

**ROUTINE GARDEN MAINTENANCE, RESCUES,  
MAKE-OVERS AND NEW PROJECTS**

**01225 783344 | 07970 008810**

**[www.axfordgardenservices.com](http://www.axfordgardenservices.com)**

## **Coming Soon!**

Exciting new detached four bedroom house in New Town  
Hullavington.

Built to a high standard with NHBC warranty by well established  
family building company.

Contact Ben Wain for further enquiries 07745 549854

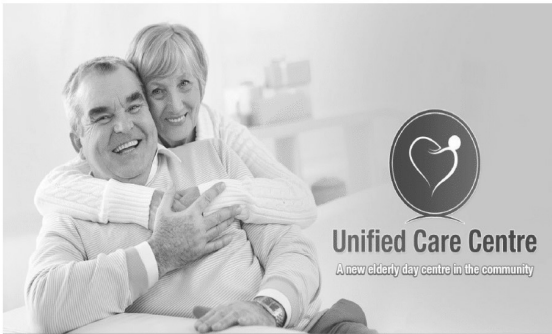


**J & R Wain Builders 01793 731553**

[www.jandrwinbuilders.com](http://www.jandrwinbuilders.com)

**Building plots always required!**





**Unified Care Centre**

A new elderly day centre in the community

*Center runs on Mondays & Tuesdays : 10:00 - 15:00*

**Respite // Elderly // Dementia Support // Health and well being // Overcoming loneliness**

*We offer person-centred day care for all people.  
We offer care that improves the quality of life for  
older people through independence and social  
integration, overcoming loneliness and isolation.*



For a fun filled time in a supportive  
and caring environment, led by  
people who are passionate about  
their work, why not join us and  
keep busy making new friends  
while your family/carers have  
respite.



**First session FREE. Two course meal is served**

## Contact Us **TODAY**

 **07590 334319**

 **infor@unifiedcarecentre.co.uk**

 **Townhall, Malmesbury.  
SN16 9BZ**

 **[www.unifiedcarecentre.co.uk](http://www.unifiedcarecentre.co.uk)**



# KINGTON CLUB



For the latest events, go to  
[www.kingtonstmichael.com](http://www.kingtonstmichael.com) and click on  
'Kington Club' or look for 'Kington St Michael  
Club' on Facebook

**Facilities** : Free WiFi, dance floor, kitchen, big screen, full-sized snooker table, pool table, skittle alley, dart board, BBQ, disabled friendly, hot drinks available, good selection of wines.

Kington St Michael Club, (Bar 12 and The Clubhouse Lounge), 12 Kington St Michael. Chippenham, Wiltshire, SN14 6JB. Tel: 01249 750336. Email [ksmclub@zoho.com](mailto:ksmclub@zoho.com)

### Opening hours:

Monday - Thursday: 4.30pm - 11pm, Friday: 4.30pm - 11pm  
Saturday: 7pm - 11pm. (unless advertised otherwise, for sports matches etc.) Sunday: 3pm - 7pm (3pm - 10pm on bingo nights)

## VILLAGE LIFE— Groups, Events & News

The '**Hullavington Hub**' is being trialled as a new Saturday morning coffee shop on the first Saturday of each month. The first session held on the 7th March raised an amazing £298! Sincere thanks to everyone that supported it. The next dates for your diary are Saturday 4th April and Saturday 2nd May from 10.00—12.00 in Church.

There's a **Spring Quiz** taking place at 7pm in the Village Hall on Saturday 18th April. Tickets are £6 each to include a ploughman's supper. Bring your own drinks! Come as a team of 4 or make up a team when you arrive! In aid of our village church maintenance. Tickets available at the Friday coffee shop in Church at the Hullavington Hub or from Jebbie Hewitt (837374), Catherine Sanderson (838824) and Ali Reid (837661).

The group 'The End of Track' will perform a **Concert** in the Church on Friday 29th May at 7.30pm. The group sing mainly 60's music and members are drawn from local villages and the Chippenham area. A bar will be available and tickets (£8) will be on sale from members of the PCC, at the Friday Coffee Mornings or The Hullavington Hub. Please support this if you can.

*Catherine Sanderson*

### **Car parking in Chippenham**

Sadlers Mead Car Park in Chippenham was closed from 10th January for 11 months to facilitate the creation of a new multi-storey car park.

It's been well publicised but the news that Sadlers Mead Car Park will be closed for 11 months doesn't bring too many smiles, what with the High Street also being closed for road works. The good news is that the multi-storey car park that's replacing it will have more spaces - something we know we need across town.

### **Annual Parish Meeting**

The Annual Parish Meeting will be held on Wednesday 22<sup>nd</sup> April 2020 in St Mary Magdalene Church commencing at 7.30pm.

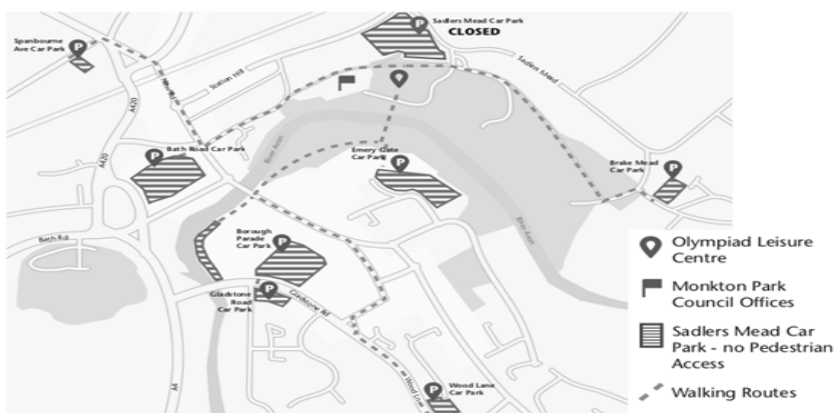
Do come along and hear what has been happening in the Parish over the last year and bring any matters of concern to the Parish Council.

# CAR PARK CLOSURE WALKING ROUTES/TIMES

From 10 January 2020 the **Sadlers Mead Car Park**, which is adjacent to the **Olympiad Leisure Centre** will be closed for 11 months as works begin on creating a new surface and multi-storey car park.

While the work is ongoing the car park will need to be closed. There are a number of other car parks available including the **Emery Gate Car Park** where we will be extending opening hours from 6am to 10pm daily. **Monkton Park Car Park** is also available Monday to Friday from 6pm and Saturday to Sunday from 8am.

Below is a map of alternative car parks, with walking routes and times that you can also use



<b>Wood Lane Car Park</b>	<b>13 mins</b>	<b>Brake Mead Car Park</b>	<b>7 mins</b>
<b>Spanbourne Avenue Car Park</b>	<b>9 mins</b>	<b>Bath road Car Park</b>	<b>6 mins</b>
<b>Gladstone Road Car Park</b>	<b>9 mins</b>	<b>Emery Gate Car Park</b>	<b>3 mins</b>
<b>Borough Parade Car Park</b>	<b>8 mins</b>		

For further information and any queries please contact: [parking@wiltshire.gov.uk](mailto:parking@wiltshire.gov.uk)

**Wiltshire Council**

The new car park will increase the number of spaces from the current 165 to 237 car spaces, three coach spaces and six motorcycle spaces. There will also be 12 electric car charging points installed initially, with infrastructure for future points.

If you were considering walking, cycling, switching to public transport or car sharing then now might be a great time to try to make the switch! Deep breaths all round - no one likes works that interrupt their daily lives but investment into making Chippenham better has to be a good thing!

## DEFIBRILLATOR AWARENESS TRAINING

Approximately 40 people attended the Community Heartbeat defibrillator presentation, organised by Cllrs Mary Cundick and Kevin Tillotson on behalf of the Parish Council.

David Toresen was the presenter, having done a bit of research (thank you Google!) I discovered that David is an independent healthcare professional and a former Senior Resuscitation Officer at St Mary's Hospital in London.


As we entered the church we were greeted by the sight of a not very well looking "dummy" lying on the floor. However if anyone is in need of resuscitation, I don't suppose they would look very well!





David, who had travelled from Lydbrook in order to demonstrate how to use the defibrillator, was impressed by the number of people attending and they were treated to an excellent and very informative presentation - interspersed with various anecdotes of his medical experiences in several of the major London Hospitals.


Having ensured the scene of the incidence was safe, the most important thing that was emphasised, was to ring 999. The operator will then guide you through the procedure and establish whether you are close enough to the defibrillator - and the need to apply CPR.


Cllr Cundick was able to assist in the demonstration of this by getting down on her knees and applying CPR to the "dummy" whilst David talked her through it. Well done Mary, you certainly did a good job.



**D DANGER** ENSURE THE SCENE IS SAFE  
 FOR YOURSELF AND OTHERS. IF IT IS NOT SAFE OR YOU ARE UNCERTAIN CALL 999 AND WAIT FOR HELP TO ARRIVE



**R RESPONSE** CHECK THE CASUALTY NEEDS HELP  
 CHECK RESPONSE BY TALK AND TOUCH.  
 SPEAK TO THE CASUALTY IN BOTH EARS, TAP COLLAR BONES. DO NOT SHAKE THEM!


**S SHOUT** SHOUT FOR HELP  
 IF THE CASUALTY DOES NOT RESPOND, SHOUT FOR HELP.  
 DO NOT LEAVE THEM AT THIS STAGE. DIAL 999 NOW!


**A AIRWAY** ENSURE AIRWAY IS OPEN AND CLEAR  
 OPEN THE AIRWAY BY LIFTING THE CASUALTY'S CHIN AND TILTING THEIR HEAD BACK. DO NOT PUT YOUR FINGERS IN THE CASUALTY'S MOUTH, YOU MAY PUSH AN OBSTRUCTION FURTHER DOWN.


**B BREATHING** LOOK, LISTEN & FEEL FOR NORMAL BREATHING  
 KEEP THE HEAD TILTED BACK AND LISTEN FOR BREATHING & LOOK TO SEE IF THE CHEST IS MOVING FOR AT LEAST 10 SECONDS. IF THE CASUALTY IS NOT BREATHING NORMALLY OR YOU HAVE ANY DOUBT, CALL 999!


**C COMPRESSIONS** NOT BREATHING NORMALLY? START COMPRESSIONS!  
 PLACE YOUR HANDS IN CENTRE OF THE CASUALTY'S CHEST AND PRESS DOWN HARD. JUST DO COMPRESSIONS. YOU CAN DO BREATHS IF YOU FEEL CONFIDENT - 2 BREATHS FOR EVERY 30 COMPRESSIONS - PUSH TWICE PER SECOND


**D DEFIBRILLATION** GET SOMEONE TO FETCH A DEFIBRILLATOR  
 IF YOU ARE ALONE DO NOT LEAVE THE PATIENT, DO CHEST COMPRESSIONS AND WAIT FOR HELP TO ARRIVE, IF SOMEONE IS AVAILABLE SEND THEM TO GET YOUR NEAREST COMMUNITY DEFIBRILLATOR

The next volunteer to take to the floor (literally) was Rose, from Gardners Drive, she demonstrated the "recovery position" whilst David talked us through it. Thank you Rose.

It was then explained that there were different techniques to be applied if dealing with babies or pregnant ladies with the presentation ending with a question and answer session.

Many thanks to David for educating us in the use of the defibrillator, I am sure that we all learned a lot about these amazing pieces of equipment.

Hopefully, the two defibrillators that we have in the Village, one at the school (provided by the Hullavington School Home and School Association) and one at the garage (provided with funding from the Malmesbury League of Friends and the Parish Council and kindly hosted by Paul Girn) will never be needed but - if they are, we now know how to use them correctly.

## UPDATE FROM DYSON

"Just quick note to inform you that pre-construction survey work will commence over the next few weeks, which may involve isolated and short term traffic management measures on the A429. We expect this work will be completed in a day, but I wanted to make you aware so that you didn't think we have started the full road scheme without engaging with the parish first.

The main works won't commence for a little while yet and we of course still plan to attend a parish meeting and brief everyone on the plan for this in advance."

This is in connection with: Planning Application: [18/08273/FUL](#) - Provision of new access arrangements to site, comprising a re-aligned section of C1 road and new roundabouts at both the junction of the A429/C1 roads and on the C1 road which was granted permission by Wiltshire Council on 28th May 2019. Details of the full works involved in the planning application can be found by clicking on the link above.

*Thanks to Maggie Bawden for the Parish Council round-up*

## HULLAVINGTON VILLAGE HALL

**Increase in Hall rental charges.** A reminder that Village Hall hire rates have been increased from April 1<sup>st</sup> 2020. A table of the new rates is published on page 55 in this copy of the Hullavington News.

**Major repairs.** Several floor specialists have visited the hall and given quotes for laying a new floor. However, they all suggest laying a new floor on top of the existing one which raises the level a little. This has repercussions with regard the folding doors, particularly between the large and small halls, and so possible replacement has also to be considered.

This valuable **village amenity** is available for all to use. It is your Village Hall. Please support the activities which are held throughout the week. There is something for everyone, from Jolly Tots for the little ones, 'Rainbows', poetry, films, art, singing, exercise classes, Short Mat Bowls, Book Group and WI. Without these groups, we would be unable to keep the hall running financially.

Annually, we need to cover the Hall Insurances, (including Public Liability), Performing Rights Society and Music Licenses, Electrical and Fire checks, Heating, Water, Church land rent, the Area Board Loan, plus costs of cleaning and running repairs. This is before any 'spare' money is available to pay for larger projects necessary to keep the hall in good working order. Hall bookings are essential to cover all these expenses. **The hall also now has WiFi.**

Accommodation consists of a large room, (nominally 100sqm) and smaller room (nominally 40sqm). In addition it has a well equipped kitchen and large foyer. It has full disabled access and facilities. Car Park.

For further information please visit [www.hullavingtonhall.org.uk](http://www.hullavingtonhall.org.uk)  
For an enquiry about bookings: [hallbookings@hullavington.info](mailto:hallbookings@hullavington.info) or telephone Paul Hadley on 01666 837 096.

### **Coming soon in the hall:**

Next Raw Event – Saturday 9<sup>th</sup> May – full details on page 36

*Thanks to Dave Hunt and Peter Parry-Williams for the above information, I hope we can all support it in whatever way we can! Ed*





Our desire is to serve God in our community, to strengthen Christians,  
and to encourage everyone to experience the love of Jesus

## SUNDAY SERVICES (IN THE VILLAGE HALL)

---

### 10:30 - Morning Praise

### 18:00 - Evening Worship

- Relaxed Family Atmosphere
  - Explore the Bible & Discover more about God and His love for everyone
  - Worship through a mix of contemporary songs & traditional hymns led by the band
  - Build friendships and be strengthened and encouraged for the days ahead
- 

For God so loved the world that He gave His one and only Son,  
that whoever believes in Him shall not perish but have eternal  
life.

John 3 verse 16

## MESSY CHURCH

---

19th April, 17th May & 21st June, 3:30pm - Hullavington Village Hall



fun, food, friendship, songs,  
crafts, bible stories

Merry church is an opportunity for families to  
spend time together taking part in activities, songs,  
stories, and sharing food whilst learning more  
about God and His love.

come and join us!

*find out more on Facebook: @MerryChurchHullavington*

---

[www.mtzionchurch.co.uk](http://www.mtzionchurch.co.uk) | 01666 837958 | [hello@mtzionchurch.co.uk](mailto:hello@mtzionchurch.co.uk)

## PARISH CHURCH OF ST MARY MAGDALENE

### SERVICES FOR APRIL AND MAY 2020

#### APRIL

Wednesday	1	9.00am	Holy Communion and prayers for healing
Sunday	5	11.00am	Holy Communion with Junior Church
Monday	6	9.00pm	Compline
Tuesday	16	8.00pm	Lent Group Service in Stanton St Quintin
Wednesday	8	9.00pm	Compline at Norton
Friday	10	1.00pm	<b>GOOD FRIDAY</b> Quiet Hour reflective Service with music
Sunday	12	11.00am	<b>EASTER DAY</b> Family Communion
Sunday	19	11.00am	Family Communion
		3.30pm	Messy Church in the village hall
Sunday	26	11.00am	All Age Family Worship

#### MAY

Sunday	3	11.00am	Holy Communion with Junior Church
Wednesday	6	9.00am	Holy Communion and prayers for healing
Sunday	10	1.00pm	VE Day Service
		6.00pm	Evensong
Sunday	17	11.00am	Family Communion
Sunday	24	11.00am	All Age Family Worship

**Little Lights** continues to meet at 10.00am on Friday mornings in church for an hour of songs, crafts and a Bible story.



### ALPHA 2020

This year we will be running Alpha in Malmesbury Abbey  
starting on Wednesday April 22 from 7.00 – 9.00pm.

The course is for anyone - with no faith, some faith, or just interested in exploring more about Christianity. Good food, fun company, and a great evening.

For more information and to book a place contact Henny Metters:  
[henny.matters@outlook.com](mailto:henny.matters@outlook.com)

## BOOK GROUP



The Hullavington Book Group has been running since 2012. Since then, we have read a huge variety of books; some we loved, others were not so popular, but we have really enjoyed reading them all and there have been lots of books we would not have considered taking off the shelf had they not been book group choices.

If you would like to join us, please contact me, or come along to one of our meetings in the side room, at the Village Hall at 2.00 pm on the second Tuesday in the month. No membership fee, just £2.00 per session to cover the hall booking and refreshments. The books are supplied by the mobile library service. You are also welcome to our Film of the Book evenings, held on the first Monday in the month, 7.00 for 7.30 pm in the side room at the Village Hall. £2.00 includes refreshments. For regular updates please look on the Village Hall website: [www.hullavingtonhall.org.uk](http://www.hullavingtonhall.org.uk)

*Elizabeth Parry-Williams, 20 The Street, Tel: 01666 837713, email: [peac@globalnet.co.uk](mailto:peac@globalnet.co.uk)*

### **DECEMBER - 'The Essex Serpent' by Sarah Perry.**

This was a disappointing novel for some but it did give us food for discussion. The Essex landscape is conjured up well in the novel and Darwin's theories and opposing thoughts of the time are important in the story. This theme has run through several of our books. A coincidence, but it is interesting to have the links.

A couple of our members felt this book was much better when read for the second time, almost a different story partly because the outcome is already known. So worth another go.

Comment: "Set in the Victorian era I enjoyed the historical context, the scientific and medical references as well as the atmospheric feel of the novel. The main themes reflected the conflicts between science and religion, reason and superstition, which reminded me of some of the issues still facing society today. I found the novel rather heavy going however and I struggled to warm to any of the characters. Something of a disappointment."

### **JANUARY - 'The Librarian' by Salley Vickers**

Loved by some, not so much by others, this was a light read. One mentioned it was 'fluffy'. A couple of people were reminded of the Miss Read 'Village School' books. The story is set in the late 50s, which led us to discuss life at that time compared with now.

Comment: "A gentle novel and a pleasant read for anyone who spent many happy hours, as a child, in their local library. It brought back a lot of memories of books I had not thought about for many years. However, I did find it rather slow and the characters unoriginal and somewhat uninteresting. I also found the second short part somewhat disconcerting and rather abrupt. Overall disappointing."

### **FEBRUARY - 'The Chalk Man' by C J Taylor**

This book was a success with our members, most enjoyed it, and it was felt that C J Taylor really understood young, teenage boys.

Comments: "Although sinister—Stephen King-like novels are not my preferred genre—I found *The Chalk Man* a surprisingly good read. The story focuses on five young friends, on the cusp of adolescence, who experience some fierce and terrifying events that will haunt them for the rest of their lives.

The opening, a very morbid discovery in the woods, will have you hooked from the start and the plot cleverly twists and turns its way along enhanced by the many surprising reveals. For a debut novel it is astonishingly good and one I would highly recommend."

"*The Chalk Man* is a coming of age novel with a bit of a sinister murder mystery. The flashback style gives reassurance that our young protagonist is alive and kicking in the here and now but there's a twist, of course. Oddly I kept thinking the setting was the States and it took me a while to adjust to the fact that, in my mind, I think it's set in Salisbury. There's even a scene at the fairground which comes each year to the city. Creepy but not too creepy!"

### **MARCH - 'The Wych Elm' by Tana French**

### **APRIL - 'Swing Time' by Zadie Smith**

### **MAY - 'Underground Railroad' by Colson Whitehead**



## HULLAVINGTON POETRY GROUP

Laughter, wry smiles and happy nostalgia set the tone for the February poetry meeting. Eight of us had rummaged through our bookshelves and found a joyful collection of traditional and modern poems, from old favourites by William Blake and Wordsworth, to new discoveries. Imtiaz Dharker's poem *Blessings* paints a delightful picture of an appreciation of water in a dry country. There were collective memories from Edward Lear and Lewis Carroll, and *Adlestrop* was read (on behalf of a member who couldn't join us this month) so that we could all appreciate the bird song. In March, Kathy introduced the poetry of Laurie Lee, almost local, so we pictured the Stroud Valleys as we read. We were impressed by the skill with which he chose his words, and the small details he used to bring the countryside to life.

On April 8<sup>th</sup>, we have a change of plan. A proposed poetry workshop has been postponed until later in the year, and instead, we will be looking at the work of a living poet with a growing reputation, Owen Sheers. On May 13<sup>th</sup> we will be enjoying Betjeman's more familiar poems.

Do come and join us in the Village Hall on the 'second Wednesday' at 2pm, for words, a cup of tea and cake. If you would like more details, contact Catherine Sanderson on 838824 or email [derekcatherine@hotmail.com](mailto:derekcatherine@hotmail.com) .

**Albert Lindsay**



*Joan Lindsay and her family would like to say 'thank you' for all the flowers, visits, cards, letters of condolence and the kindly words along the Street. These all meant so much to us and gave comfort in our sorrow.*

### **Don't Fret!**



If you are interested in becoming a guitarist or enhancing skills that you have already learned, then look no further.

I offer beginners and intermediate guitar lessons, for budding musicians of all ages, in Hullavington and the surrounding area.

For assistance with all aspects of music theory, maintenance of instruments and equipment or merely just learning your favourite song, send me an email at:

**[lloydttucker21@yahoo.co.uk](mailto:lloydttucker21@yahoo.co.uk)**

Or give me a call on: **01666 837492**

**Lloyd Tucker**

## AUSTRALIAN BUSH FIRES

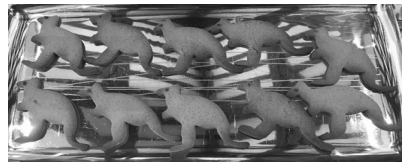
On Saturday 2nd Feb, a coffee morning and cake stall in aid of the Australian Bush Fires appeal made an amazing £855. The money was shared between Red Cross Australia's Appeal to help families devastated by fires including the firefighters and the World Wide Fund for Nature's Australian Appeal to help animals injured or suffering loss of habitat.



Many thanks to all who supported the event in any way- the cake makers , the helpers and those people who donated generous gifts of money.

*Jebbie & Dudley Hewitt*

Gingerbread Kangaroos baked by Maggie Dyson—one of the many delicious cakes donated!



## **VANDALISM IN HULLAVINGTON**

On Sunday 7<sup>th</sup> March, youngsters were heard “messaging about” in the bus shelter in the middle of the village. On Monday it was found that the blue cane chair had been damaged beyond repair. Empty cigarette packets and stubs were also found. The damage to the chair is classed as Criminal Damage and has been reported to the police. This shelter is cleaned on a regular basis by a volunteer and the chairs, over the years, have become a part of the shelter and are well used and respected by young and old. A couple of years ago, the judges in the Best Kept Village commented on what a good idea it was to have them in there. Please, if anyone sees or hears anything that is suspicious or considered to be anti-social behaviour please let the police know on 101.

## **SPEEDING TRAFFIC THROUGH THE VILLAGE**

This problem was raised as a matter was of great concern during the consultation for the recently approved NDP. Peter Parry Williams researched the options and the Parish Council addressed the matter by purchasing a Speed Indicator Device. To comply with Highway regulations, it has to be moved on a regular basis and the batteries recharged. To date, only 3 people have voluntarily helped Peter to move the sign. These are all gentlemen in their late 60s or early 70's. The equipment is heavy - fortunately, Jack Derrick has offered the use of his truck to transport the pole and the sign.

The re-siting of the sign takes about an hour and we are looking for younger people to volunteer to help. If you can spare an hour on an occasional basis, please either contact me on 01666 837311 or email: [maggiebawden@gmail.com](mailto:maggiebawden@gmail.com) or Peter Parry Williams on 01666 837713 or email: [peac@globalnet.co.uk](mailto:peac@globalnet.co.uk). Thanks

*Maggie Bawden*

## Hullavington Help for COVID-19 Virus

Much thought has been given on how to reach everyone in the Village. Some people have family and friends who are helping now, but we wanted to put a scheme in place that would help everyone, even if their families or friends caught the virus.

Firstly, if anyone is in need of help due to the virus, please contact Issie Greenman (details below) and she will ensure someone contacts you to give you the assistance you require. A card will also be sent to each household to ask whether help is required.

The Village has been split into 8 sections and each section has a person to coordinate help in that area. The coordinators are: Alison Reed, Catherine Sanderson, Katy Sheard, Sarah Tompkinson, Henny Metters, Lucinda Cregan, Mandye House and Issie Greenman. If you would like to offer assistance, please contact Issie Greenman and she will put you in touch with the coordinator in your area of the Village.

The Village Shop will do all they can to help and have issued a basic shopping list with prices, that can be collected by the helpers and used by those of you who are self-isolating.

John and Henny Metters at Court House have offered the following: *"If you are self-isolating and would like some fresh air and exercise, you are welcome to go for a walk around the lake at Court House or use the tennis court. Feel free to enter any day between 2-4pm using the gate on Hill Hays Lane and enjoy the Spring flowers and lake. Please use the wipes available at the gate to wipe the gate latch when you leave and please don't walk up to the Terrace or use the garden furniture. The tennis court can be used between 2-4pm and 4-6pm, please book a time in advance by telephoning 837778, you'll need your own rackets and balls. When you've finished, please wipe anything you've touched".*

The Church of England will remain open for people to pray and those of us at Mount Zion Church (although we are not meeting in the hall at this time), will be praying for you. People in both Churches will be available to pray with you if you would like.

With the schools closed, please spare a thought for Mums and Dads who have children at home and help where you can.

Again, thank you to everyone who is helping. Well done everyone and let's show our love and care by being "Good Neighbours".

If anyone else has ideas about how to help us in these extraordinary times, please contact:-

- Issie Greenman 07879 653326 or 01666 837958

issie@mtzionchurch.co.uk or

- Maggie Bawden 01666 837311, maggiebawden@gmail.com.

*Issie Greenman & Maggie Bawden*

In addition to the above, the Parish Council commented:  
"Hullavington Parish Council does hold a Community Resilience Plan that is designed to deal with incidents such as floods, power loss and pandemics and this is activated by Wiltshire Council Emergency Planning Dept. To date WC has not contacted the Parish Council.

A member of the Parish Council has contacted 15 people in the village who may be in need of assistance because they live alone, or have health problems. All are fine and in typical Hullavington style - have relations, friends or neighbours ensuring that they stay that way.

Several people have used the "Hullavington Happenings" and newly created "Hullavington Happenings Community Response Covid-19" Facebook pages, to offer help if needed". *Maggie Bawden*

—————

*A massive 'thank you' to the many people involved in co-ordinating this response. Thanks also to the admin team of the FB groups and to the whole of the Hullavington Community as we pull together to offer assistance wherever we can. Ed*

## Now helping people on the move in North Wiltshire

**Perry  
Bishop**  
and Chambers



"I am thrilled that award-winning estate agents Perry Bishop and Chambers are expanding into North Wiltshire and that they have invited me to head up valuations and sales in this special part of the world, where I also happen to live.



If a move is on the cards this year, you can now enjoy a very personal service – from valuation through to sale – with the backing of an established and respected brand when you choose to sell with Perry Bishop."

**Call me on 01249 470166 or 07971 244865 for your FREE consultation and property advice.**

**Or email me [carolineferris@perrybishop.co.uk](mailto:carolineferris@perrybishop.co.uk)**



My charity of the year.  
Donation from every sale.



**Wiltshire  
Air Ambulance**  
funded by you, flying for you



Call now for a  
**FREE**  
Quotation

## A Double Glazing Service that you can rely on...

- Heritage Cottage Windows
- Composite Doors
- Casement Windows
- Tilt and Turn Windows
- Vertical Sliders
- Patio Doors

 RESIDENCE 9

 **Solidor**

**rational**  
WINDOWS & DOORS

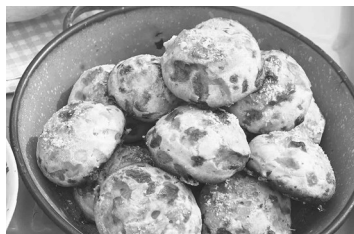
*Truedor*



Call us on **01666 840 042**  
[www.sharpeswindowsanddoors.co.uk](http://www.sharpeswindowsanddoors.co.uk)

## RECIPES

### Grandma Tigner's Cheezies



113g/4oz Rice Krispies

198.5g/7oz plain flour

250g/9oz Extra Mature Cheddar Cheese, grated

113g/4oz salted butter, softened

Cayenne Pepper to taste (I use between ½-1 tsp, ½ lets you know there may be some pepper contained therein, 1 tsp and you are certain of it!)

Set oven to 160C. I don't use a fan oven for baking, so not sure how to accommodate that one.

- Grate cheese, then cream with softened butter either in food processor or with hand mixer.
- Add cayenne pepper and mix in thoroughly.
- Gradually add flour to your mixture until you have a workable dough.
- Either with hands or a spoon, work the Rice Krispies into the dough as evenly as possible. Don't worry if some get crushed along the way!
- Form the dough into small balls, about 1"-1 ¼" in diameter, placing them on a baking tray as you go, allowing about 2" between each ball.
- Using a fork, flatten the balls with some vigour, so that the marks of the fork tines are visible on each of the biscuits. (Makes them crunchier!)
- Bake in the centre of the oven for approximately 20-25 minutes or until nicely browned. It makes about 4 – 4 ½ dozen biscuits, depending on the size of the balls.

This was my Grandmother's recipe and not a lot can really go wrong with it—if you like a cheesier flavour, add more cheese! Add as much pepper as you like! If you want something a bit more substantial, add more flour. Enjoy!

*Recipe kindly sent in by Martha Gordon*

## GOLDENTHREADS

With almost a full house, the group met to discuss January's letter 'G' and remember Brenda Saunders. Everyone agreed she would be sadly missed; such a long standing member of the group, a character with many forthright views who never suffered fools gladly. There were a few who remembered her from 60 or more years ago too.

Ali brought a lovely framed stitched picture of her Grandchildren. There was a collection of Gs, namely Gin, Green glitter, and Ginger wine, as well as Ginger preserve. Two lovely watercolours, of a Gate, actually a church Lychgate, and a pair of Grebes, copied from a photograph from the RSPB. Rosemary T had brought a framed 8 Generation Family tree, with photographs of them all. Nick brought a DVD of a Gilbert & Sullivan, his first introduction to their Operettas, something he still enjoyed today and shared with his wife.

'H' was the letter for February - Ali had sent along a map of the UK for each to place a marker for their original Home

Nick shared memories of visiting various shows for Heavy Horses, Rosemary brought various items concerning Hardenhuish Church, Marjorie bought a pot of Herbs de Provence, Alex a model of a Horse that she called Trigger. Di had brought a Horseshoe. Sandra brought one of her handyman son Geoff's many Hammers. Malcolm had several items relating to Hartham Church with memories of his youth. Eileen brought memories of a Hot Air Balloon trip given to her by her family for a special birthday, and the awesome feeling of floating above the Wiltshire countryside.

The hub of conversation continued over a welcome cup of tea and Ali's gorgeous cakes and savouries.

*Ali Reed 01666837661 and Eileen Fry 01666838793*

# REMI HARRIS

WITH TOM MOORE ON DOUBLE BASS

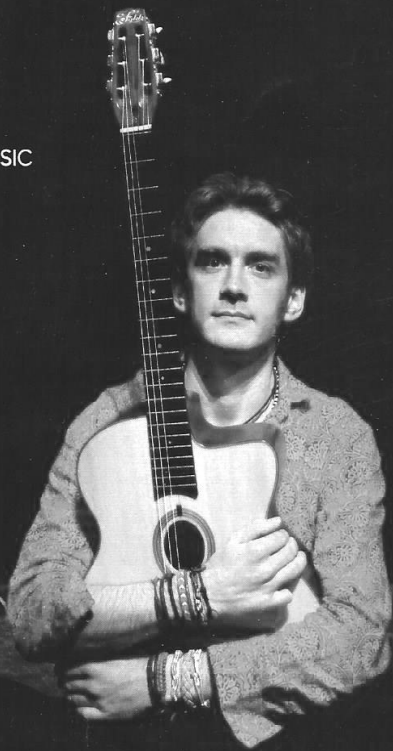
*"extraordinary musician"*  
JAMIE CULLUM, BBC RADIO 2

*"astonishing stuff"*  
CERYS MATTHEWS, BBC RADIO 6 MUSIC

*"Brilliant"*  
MARTIN TAYLOR MBE



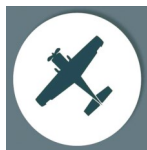
**ACOUSTIC JAZZ  
TO ELECTRIC BLUES**



**Hullavington Village Hall**  
**Saturday 9th May 8pm**

Tickets £10 | £8 concession | £5 children  
[poundarts.org.uk](http://poundarts.org.uk) | 01666 837569 | 07816 304904

[WWW.REMIHARRIS.COM](http://WWW.REMIHARRIS.COM)



## THE HULLAVINGTON ARMS

01666 837770

<b>Monday</b>	<b>Closed</b>
<b>Tuesday</b>	<b>18.00—23.30</b>
<b>Wednesday</b>	<b>11.30—14.30 and 18.00—23.30</b>
<b>Thursday</b>	<b>11.30—14.30 and 18.00—23.30</b>
<b>Friday</b>	<b>11.00—23.30</b>
<b>Saturday:</b>	<b>11.00—23.30</b>
<b>Sunday:</b>	<b>12.00—18.00</b>

Tea, coffee, cakes and breakfast rolls available during these times.

**Award winning food and drink in a friendly, relaxed environment!**  
**WW2/RAF theme. Huge garden, family and dog friendly.**

Please see the Event Board outside the pub with the latest info on what's on and music events!



@hullavingtonarms or [www.hullavingtonarms.co.uk](http://www.hullavingtonarms.co.uk)

Quiz nights take place on the 3rd Thursday of the month, Pie Night every Tuesday and Fish Night on the last Thursday of every month. We're hosting the 'Cotswold Cake Sportive' on the 5th July—a 30 mile cycle event—do join in!

## THE OLD STABLES SADDLERY

07535 737040

New & 2nd hand clothing and equestrian supplies, horse and dog food. Also incorporating exclusive and unique ranges from Crafty Pigs & Feathers by Henry clothing and hats. For updates and opening times, please see Facebook @oldstablesaddlery or [www.hullavingtonarms.co.uk/oldstablesaddlery](http://www.hullavingtonarms.co.uk/oldstablesaddlery)



In February, David Head told us all about the beautiful Faberge eggs that can be seen in the museum in St Petersburg. We were surprised at how big some of these are, but no matter their size they are all very expensive and not something any of us could afford.

After our AGM in March, our new WI year begins and once again we have a very interesting programme; starting with a talk about Surrendell and all that has happened there. David Witt will be leading this meeting and we are opening this to anyone in the village who would like to come and learn about its history. This will be at 2pm on Wednesday April 15<sup>th</sup> in the Village Hall. Refreshments will be served afterwards.

On Wednesday April 29<sup>th</sup> at 7.30pm we are hosting the John Aubrey group of WIs when the speaker will be Neil Stace. He is a Lieutenant Colonel in the army and reached the final of the BBC programme The Sewing Bee. He takes his sewing machine with him wherever he is sent, even into war zones . All tickets for this event have already been sold.

On Monday May 18<sup>th</sup> at 2pm we are holding a Scrabble afternoon with a cream tea for all those who are experienced players and also those who would like to learn. There will be prizes for those with the highest scores in each category i.e. beginners group and experienced group. Do come along and have an enjoyable afternoon for only £8.

We always welcome visitors and new members to our meetings which are held on the 3<sup>rd</sup> Wednesday of each month at 2pm in the village hall. Come and see what we do.



# Driving Miss Daisy<sup>®</sup>

Your **safe, friendly** and **reliable** companion and **driving service** for:

- \* Appointments
- \* Assisted shopping trips
- \* Holiday travel
- \* Attending clubs and meetings
- \* Meeting up with friends
- \* Day trips and wish lists
- \* .....or wherever you want to go and at your own pace

To find out more, contact  
**Helen on 07458 012 460**

Email: [Malmesbury@drivingmissdaisy.co.uk](mailto:Malmesbury@drivingmissdaisy.co.uk)

Facebook: Driving miss daisy Malmesbury

[www.drivingmissdaisy.co.uk](http://www.drivingmissdaisy.co.uk)

## Livery Available Norton



Various and different livery packages available from DIY upwards in quiet, rural location. Whether you are wanting a base to compete from, somewhere to enjoy a quiet hack or a base to hunt from, this yard offers it all!

- Large, airy stables
- Individual paddocks with all year-round turnout
- Secure tack room with CCTV
- Plenty of storage space
- Undercover horse walker
- Flood-lit fenced outdoor arena
- Parking for lorry/trailer
- Excellent hacking including off-road tracks
- Perfect location for various and different equestrian competition and schooling venues with good access to the M4 and A429

All set in a beautiful, peaceful location in the heart of the Duke of Beaufort's hunting area. Call Mary Cundick on: 07867804456



### LONDON TRIPS 2020



#### **Saturday 23rd May**

Leaves Hullavington at 8.20 am, (can pick up in Malmesbury and Corston too). Drop off points in London: V&A/Natural History Museum, Harrods, The Haymarket and The London Eye.  
Returns from Hanover Square (Off Oxford Street) at 7.30 pm.  
Cost with a full coach, £16 per adult, and £9.00 for under 18.

#### **Thursday 8th October**

Bletchley Park. Pick up in Hullavington.  
£38.00 adult/£36.00 Senior/£30.00 child. Includes admission.

#### **Saturday 21st November**

Always popular, please let us know if you would be interested in joining us on this trip.

Peter and Elizabeth Parry-Williams 20 The Street. Tel: 01666 837713  
email: [peac@globalnet.co.uk](mailto:peac@globalnet.co.uk)

*Coronavirus - until advised otherwise, all trips will continue as normal*

## FILM GROUP



**22nd APRIL - KNIVES OUT 2019**  
Certificate 12 2 hours 10 minutes

An American Black Comedy 'whodunit'.

Starring Daniel Craig, the cast includes: Chris Evans, Jamie Lee Curtis, Don Johnson, Toni Collette and Christopher Plummer.

Wealthy crime novelist Harlan Thrombey invites his family to his Massachusetts mansion for his 85th birthday party. The next morning he is found dead with his throat slit. Debonair Detective Benoit Blanc (Daniel Craig) is called in to investigate.

**27th MAY - LITTLE WOMEN 2019**  
Certificate U 2 hours 15 minutes

A new version of the well known story by Louisa May Alcott, directed by Greta Gerwig. The film was awarded an Oscar and a BAFTA for Best Costume Design in 2020.

Starring Saoirse Ronan as Jo, Emma Watson as Meg, Florence Pugh is Amy and Eliza Scanlan plays the part of Beth.

The cast also includes Laura Dern ('Marmee'), Timothée Chalamet ('Laurie'), and Meryl Streep as Aunt March.

SAOIRSE RONAN EMMA WATSON FLORENCE PUGH ELIZA SCANLAN LAURA DERN TIMOTHEE CHALAMET MERYL STREEP

## LITTLE WOMEN

FROM GRETA GERWIG  
THE SCREENPLAY AND DIRECTOR OF LADY BIRD



## FILM GROUP EXTRA

Friday 17th April and Friday 15th May - a chance to see a 12 or 15 certificate film in the side room in the Village Hall. Film Group charges apply. Please look out for posters which will show Film EXTRA titles and details. Information can also be found on the Village Hall website at [www.hullavingtonhall.org.uk](http://www.hullavingtonhall.org.uk)

# HULLAVINGTON Village Show

FLOWERS

PRODUCE

ARTS

CRAFTS



**Saturday 29 August**  
in the Village Hall 2.30pm - 4pm

Free exhibit entries for all competitors

Rosettes for all children's entries

# 2020 Draft Schedule



## Vegetables and Fruit

- V1 4 Coloured potatoes
- V2 4 White potatoes
- V3 3 Onions trimmed and tied
- V4 3 Runner beans
- V5 1 Other veg any variety
- V6 1 Lettuce
- V7 3 Carrots
- V8 3 Beet
- V9 1 Cucumber
- V10 6 Soft fruit
- V11 Heaviest marrow
- V12 3 Rhubarb sticks trimmed
- V13 2 Courgettes with flower
- V14 3 Dessert apples
- V15 3 Cooking apples
- V16 4 Tomatoes (with calyx)
- V17 Cherry tomatoes on a vine (at least 4)

## Flowers

- F1 4 Asters
- F2 4 Cosmos
- F3 3 Dahlias, any variety
- F4 3 Rose, any variety
- F5 Minimum 4 sweet peas
- F6 3 Stems Annuals
- F7 3 Stems Perennials
- F8 1 Gladioli
- F9 3 Stems Penstemon
- F10 Foliage pot plant
- F11 Sunflower in a pot

## Flower arrangements

- FA1 An arrangement in a recycled container (max 30x30x30cm)
- FA2 A hand tied arrangement (max 30x30x30cm)
- FA3 A jug of hedgerow flowers
- FA4 Petite arrangement, 3 flowers and foliage (max 10x10x10cm)
- FA5 Miniature arrangement for novices\* (max 15x15x15cm)



*\* Novice is someone who has not previously won a flower arranging class*

## Food

- FO1 Jar of marmalade
- FO2 Jar of soft fruit
- FO3 Jar of stoned fruit
- FO4 Jar of jelly
- FO5 Jar of chutney
- FO6 Apple pie on a plate
- FO7 Serving of coleslaw
- FO8 4 Savory scones
- FO9 Traditional Victoria Sandwich
- FO10 4 biscuits on a plate
- FO11 3 Bread rolls
- FO12 Anything vegan but edible
- FO13 Home Brew (fermented)

## **Crafts**

- C1 A soft toy
- C2 An item of clothing
- C3 Anything “up-cycled”
- C4 An item of craftwork not on schedule

## **Art**

- A1 A portrait
- A2 Abstract
- A3 ‘Gateway’
- A4 ‘Church’

## **Photography**

- PH1 ‘Animal Magic’ (black and white)
- PH2 ‘Reflections’
- PH3 ‘In the garden’
- PH4 ‘Hullavington Weather’

## **Children Under 9 years** \*Rosettes for all entries\*

- UC1 An picture or model of “Peppa Pig”
- UC2 A thumbprint picture (A4 max size)
- UC3 A piece of pretend food
- UC4 A sock puppet

## **Children 9 - 14 years** \*Rosettes for all entries\*

- C1 Poster (A4) ‘Pick up your dog poo!’
- C2 A limerick using the word ‘Hullavington’
- C3 A photoshopped picture
- C4 Anything “up-cycled”



## We have an expert and friendly team of lawyers to help with your individual requirements.

Whether you are **buying** and **selling property**, **need a will**, going through a **divorce** or need **legal advice** for your **business**. Batt Broadbent are the team to help you.

- Buying & Selling Property
- Making a Will
- Divorce or Separating
- Cohabitation
- Pre-nuptial Agreements
- Family Issues
- Commercial Property
- Business Sales and Purchases

01249 479 303 | [www.battbroadbent.co.uk](http://www.battbroadbent.co.uk)  
65 St Mary Street, Chippenham, Wiltshire, SN15 3JF



## Introducing Sue Badminton:

Chartered Legal Executive at the Chippenham office.

Sue Badminton is a Chartered Legal Executive and has **over 20 years of experience.**

Sue has spent her **conveyancing career working in Malmesbury and Chippenham.** Her **local knowledge, expertise and efficiency** are well known in both of those areas and the surrounding villages.

If you are in need of a **trusted expert in conveyancing** then get in touch with Sue by calling the Chippenham office.

**If you instruct us before you find a buyer we will reduce our legal fees by 10%.**



Tuesdays 9:30—11:30

Hullavington Village Hall

We are a warm and friendly baby and toddler group  
meeting every Tuesday during term time.

Great selection of toys for all ages,

Craft and messy fun,

Snacks for the children.

For the grown-ups: Tea, Coffee and Cake!

£2.50 per family or £1 for under 1's

Contacts: Rachel 07850 176901 or Anne 07811 036324



# It all adds up +

*We look after your accounts  
while you run your business*

Save yourself time, worry and money by using our friendly and helpful accountancy services. Accounts, tax calculation, VAT returns, bookkeeping and payroll management – we handle it all on your behalf.

**Take advantage of fixed fee options as well as a low-cost start-up package for new businesses.**

*“Friendly and flexible  
accountancy for all types  
of small business”*

For a **FREE** initial meeting to discuss your needs,  
call **01666 824466** or visit **[www.duncanjoyce.com](http://www.duncanjoyce.com)**

**duncanjoyce**   
& associates chartered accountants





## **ACER TREE SURGEONS ARBORICULTURAL ASSOCIATION APPROVED CONTRACTOR**

Acer Tree Surgeons Ltd are at the forefront of the Arboricultural industry, with a huge range of skills and techniques, we are always able to deliver exceptional service to our clients. We currently have clients in both domestic and commercial sectors throughout Wiltshire, Somerset, Bath, Bristol and surrounding Counties.

The team are all NPTC qualified with chainsaw and maintenance CS30 & 31, aerial rescue CS38, climbing with a chainsaw CS39, pruning CS40 and dismantling operations CS41. We are all first aid at work and manual handling qualified.

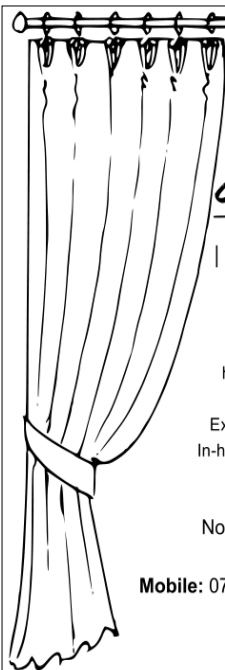
Services include:

- Tree Removals, Dismantles and Felling
- Crown Reductions, Re-Shaping and Pruning
- Hedge Cutting
- Management of Dangerous Trees
- Stump Grinding and Removal
- Free Quotations and Tree Health Check

Contact Adam M.Arbor.A, FdSc Arb ND Arb

Tel: 01666 718078 / 07843 082634

Email: adamroberts@acertreesurgeons.co.uk



*Lucy Tom*

I N T E R I O R S

Sherston soft furnishing studio

Curtains and blinds  
handmade by our experienced team  
Design consultations in your home  
Extensive library of fabric pattern books  
In-house traditional and modern upholstery  
Box seat and scatter cushions

Noble Street, Sherston SN16 0NA

**Showroom:** 01666 841433

**Mobile:** 07813877509 **Email:** [lucy@lucytom.com](mailto:lucy@lucytom.com)

[www.lucytom.com](http://www.lucytom.com)

**Learn a new skill  
at our making workshops!**

2020 Calendar

**Saturday 4th April**  
Indian block printing

**Saturday 25th April**  
Drum lampshade making

**Sunday 26th April**  
Pop-up Repair Shop  
*in aid of Sherston School*

**Saturday 9th May**  
Cushion making

**Saturday 16th May**  
Roman blind making

**Saturday 30th May**  
Principles of curtain making

**Sunday 7th June**  
Tote bag making

**DREAMSCAPE**  
**●●●electrical**

[www.dreamscape-electrical.co.uk](http://www.dreamscape-electrical.co.uk)

**Call Tony Parfrey**

**Tel:** 01666 837 580

**Mob:** 07815 932 197

**Rewires**

**Extensions / New build**

**Fuse boxes**

**Security / Outdoor lighting**

**Fault finding**

**Testing and inspection**

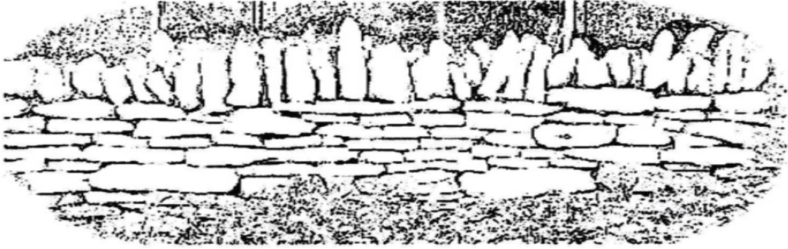
**Lighting / Sockets**

**ELECSA**

Part P  
Approved Contractor

[www.elecsa.co.uk](http://www.elecsa.co.uk)

**Traditional Dry Stone Walling  
New and Repairs**



**Nigel Chivers 01666 823980**  
**drystonewalls@gmail.com**

## **OIL TANK NEED REPLACING?**

### **Specialist Oil Tank Replacement**

- **Repairs & Maintenance Service**
- **Complete Installation Service**
- **Oil, Derv & Water Tanks**
- **Plastic & Metal Tanks**
- **Domestic / Commercial**
- **Agriculture**



**Call us for a Free Tank Inspection on**

**0800 622866 | 01672 841517**

**Email us on:** [info@kdtanksupplies.co.uk](mailto:info@kdtanksupplies.co.uk)

Smithfield's Yard, Ogbourne St. George,

Marlborough, SN8 1SX

Family Business Est. Since 1987

**[kdtanksupplies.co.uk](http://kdtanksupplies.co.uk)**

**KD TANK**  
SUPPLIES LTD

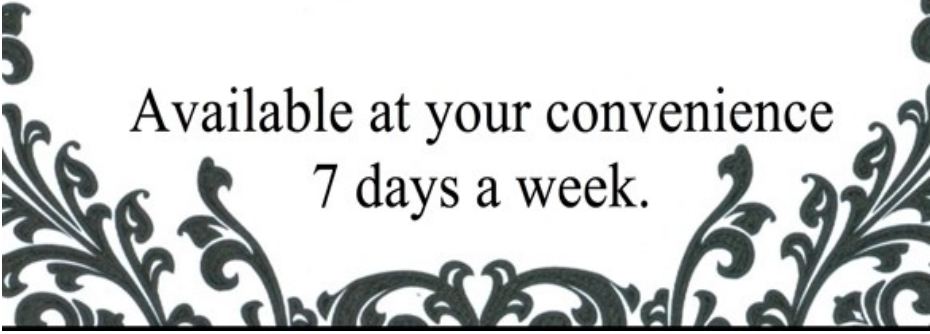


**M.Vincent  
Windows & Glazing**

**For all your glazing needs**

Wiltshire & Gloucestershire areas  
Fast, friendly and efficient service

**Call for your FREE quotation  
07890 138453 / 01666 460106  
enquiries@mvincentwindows.co.uk  
www.mvincentwindows.co.uk**



**Available at your convenience  
7 days a week.**



Planning a holiday or weekend away? Worried about putting your cat into a cattery?

Why not let me come and visit your cat once or twice a day? I'll make sure to give her lots of fuss and attention, and everything else she needs. Most cats prefer to be in the familiar and comfortable surroundings of their own home, finding it much less stressful than a cattery. I can also come and look after other small animals such as rabbits, guinea pigs and chickens etc.

Having someone come in to look after your pets also helps with security, and I'm happy to open and close curtains, turn lights on, pick up post from the doormat etc.

I am a reliable, caring, responsible, friendly animal lover, who would love to help you and your four-legged friends!

I also offer dog care services which include walks on or off the lead, or coming out to your house to let them out in your garden for a run around, fuss and a feed etc.

Please take a look at my website and read my feedback from satisfied clients, or email me at [caroline@muddypawpaws.co.uk](mailto:caroline@muddypawpaws.co.uk), or phone me on 07929 774497.

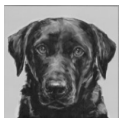
References available upon request.  
[www.muddypawpaws.co.uk](http://www.muddypawpaws.co.uk)

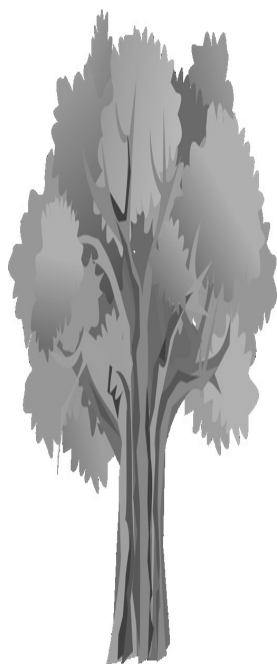
### **Claws and Paws Cards**

Need a dog or cat themed greetings card for someone special? We have hundreds of great cards to choose from, something to suit everyone. Please have a look at:-

[www.clawsandpawscards.co.uk](http://www.clawsandpawscards.co.uk)

or email: [enquiries@clawsandpawscards.co.uk](mailto:enquiries@clawsandpawscards.co.uk)





## **Will PRICE TREE MAINTENANCE**

ALL KINDS OF TREES EXPERTLY  
SHAPED, TOPPED, PRUNED OR FELLED

**We remove all garden waste to  
recycling centres**

Hedges pruned and trimmed  
Fencing and gravelling

**No job too large or too small**

Estimates given without obligation  
**DIRECT: 07760 452016 OFFICE: 01793  
238679**

# **4**

## **COUNTIES OIL TANKS**

**SUPPLIED  
& FITTED**

**Call 01666 510510**

**Mobile 07966 690 807**





- Corns
- Nail Trimming
- Verrucae
- Hard Skin
- Athlete's Foot
- Ingrown Toenails
- Nail Infections
- Cracked Heels (fissures)

# foot health care

**Sina Ohms**

MCFHP MAFHP

*Foot Health  
Practitioner*

## *Clinics available at:*

The Chippenham  
Natural Therapy Centre  
Lodge Road (above Lodge Surgery)  
Chippenham, SN15 3SY  
**Tel: (01249) 443390**

The Oxford Practice  
5 Oxford Street  
Malmesbury, SN16 9AX  
**Tel: (01666) 824560**

## *Home Visits:*

**Tel: (01666) 838683**  
**Mob: 07593 324128**

[www.foot-health-care.co.uk](http://www.foot-health-care.co.uk)



## **So Gro Pilates**

Small groups and private lessons available at my studio in  
Hullavington  
(equipment or mat work)

- Strengthen & tone core muscles
- Improve flexibility & mobility
- Improve your posture & balance
- Alleviate stress & promote relaxation

**ALL AGES & ABILITIES WELCOME**

For further details call Sophie on 07753 143674  
or email—[sophiegrogan77@gmail.com](mailto:sophiegrogan77@gmail.com)

---

## **Neil Farr—Plumbing and Heating**

**01793 526207  
07799595701**

No job too small or big, including

Bathroom refits, central heating systems

Free quotations and estimates

Emergency call outs

**(WELL KNOWN IN HULLAVINGTON)**

# Dodford Farm Daycare Nursery



## **We will offer your child:**

Full time childcare available 7.30 am to 6pm Monday to Friday  
Four classrooms for children ranging from ages 0-5  
Experienced and well - qualified staff  
A high staff to child ratio  
A keyworker system for individual attention for your child  
Two large outdoor play areas  
An indoor softplay and sensory room  
A wide variety of outdoor activities including farm walks  
Plenty of stimulating indoor activities  
All areas of learning in the foundation stage  
We accept Nursery Education Grant funding  
Plenty of parking available

**Please phone Kim Branston for details on  
01249~891349 or  
e-mail [dodfordfarmdaycare@tiscali.co.uk](mailto:dodfordfarmdaycare@tiscali.co.uk)**

***Dodford House Farm ~ Dodford Lane  
Christian Malford ~ Chippenham  
SN15 4DE***

# RATES FOR HIRING HULLAVINGTON VILLAGE HALL

## Rates from 1st April 2020

### Basic charge for Hall £ per session (see note 1)

*(Commercial/Government users see note 2)*

User Category	Core User	Village User	Non-Village
Main Hall	£20	£26	£39
Side Hall	£12.50	£14.50	£24
Both Halls	£26.50	£31.50	£52.50

*Supplementary Charges (below) are cumulative and additional to the above Basic Charge.*

Up to 24 people	nil	nil	nil
25-49 people	nil	£5.50	£9.50
50-99 people	nil	£10.50	£15
100+ people	nil	£12.50	£28
Consumption of alcohol (see note 3)	nil	£10.50	£14

### Notes

- 1 The Hall is hired on a session basis, there are 3 per day:  
**AM** 09.00—13.00, **PM** 14.00—18.00, **Eve** 19.00—23.00
- 2 Booking fees for Commercial / Government use are by arrangement.
- 3 Temporary Event Notices (TENS) are required by law when alcohol is sold on the Hall premises. It is the sole responsibility of the hirer to arrange for the TENS and to declare his/her intention to apply for one when booking the hall.

To hire the Hall, please contact Paul Hadley on 01666 837096 or Bob Fenner on 01666 837320. Full details of hire are on the village website [www.hullavington.info](http://www.hullavington.info). Villagers who would like a one-off event in the hall should book min 3 months in advance.

For other matters concerning the Hall, contact Bob Fenner by telephone or at [bobfenner5@gmail.com](mailto:bobfenner5@gmail.com). **WiFi now available!**

## 200 Club for the Village Hall

£

The Village Hall 200 Club provides invaluable support to help maintain and develop the facilities in the Village Hall. We currently have a few vacancies for tickets, just £12 per annum. Please contact Rachel Hurst 01666 837671 Rachel.daa@btinternet.com or Geraldine McKibbin 01666 837736 geraldine@mckibbin.org.uk. The draw takes place on the last Saturday of each month. Anyone is welcome to see fair play!

Congratulations to our winners and wishing all members Good Luck in the 2020 draws.

*The 200 Club Team – Rachel Hurst, Linda Hadley, John Samuel, Geraldine McKibbin*

Recent Winners

**Lizzy Pearce**

**£50**

**Paul Girn**

**£25**

**The 200 club recently handed a cheque for £1000 to Village Hall Chairman Bob Fenner. The money will be used to maintain and develop facilities at the Hall. Thank you to all our supporters.**

*Collectors: Linda Hadley, Geraldine McKibbin and John Samuels*

## Handy Information

### **Shop:**

Mon—Fri 08.00—18.00

Sat 08.30—16.00

Sun 09.00—13.00

### **Post Office:**

Mon, Tues, Thur 09.00—12.30

Wed 09.00—12.00

Fri—Sun Closed

### **Mobile Library:**

Thursday 2nd April, outside the school 10.15 - 11.00am. It is free to join, four week loan period.

Book group	Liz Parry Williams	01666 837713
Film Group	Sarah Harmer	01666 837704
Football Club	James Nation	07894 715080
Golden Threads	Alison Reed	01666 837661
Village Hall Committee	Bob Fenner	01666 837320
Health Liaison	Lis Cheshire	01666 837558
Jolly Tots	Rachel Cripps	07850 176901
M'bury & district link for medical transport		01666 840861
Mnt Zion Church	Hugh Greenman	01666 837958
N'hood Police Team		101
Parish Church (Mon day off)	Rev Elveen Mead	07905489044
<a href="http://www.hullavingtonparishcouncil.org.uk">www.hullavingtonparishcouncil.org.uk</a>	Sharon Neal	01249 659842
Primary School & Little Hoots Nursery	Sue Tudge	01666 837604
Recorder Group	Maggie Dyson	01666 837358
Rights of Way, Roads & Pavements		0300 4560105
Short Mat Bowls	Pat Harper	01666 838646
1st Stanton Rainbows	Sandra Hayes	01249 656224
200 Club	Rachel Hurst	01666 837671
Yoga	Nicola Williamson	07557 641204
Women's Institute	Isobel Acott	01666 837458

## **“Meet the Villager”**

***A light hearted chat with a ‘local’  
about their time in Hullavington***



In this edition we meet Gill Knights

I moved to Wellington Place in June 2018 with my husband Matt and two daughters Amy and Ella. Although we haven't lived here long it was easy to settle into such a friendly, welcoming village. We feel very lucky to have our daughters attend the village school which is more than we could have hoped for.

Many of you might know me from working at the Village Shop which I really enjoy - I have gotten to know some great and unforgettable characters (it helps to match a face to a newspaper!)

My husband is stationed at MOD Corsham with the Royal Air Force, he has served 13 years so far which has taken us to North Yorkshire, Cyprus, West London and now Hullavington. We have been together for 19 years and will celebrate our 10 year wedding anniversary in May this year.

As a family we love to be in the garden, growing our own fruit and vegetables and we all love to cook. Before starting school my girls attended Jolly Tots, which I think is a great asset to the village.

**Guilty pleasure?** Singing and sewing (not at the same time)

**Who would play you in a movie of your life?** Christina Hendricks

**If you could change one thing in the village?** We need a decent play park.

**Dream dinner party guest?** My Grandad

**Advice to teenage self?** Buy a house!

**Cat or dog?** Cat

**Happiness is...?** Listening to my girls laugh

**Bucket list item?** Designing my own kitchen

# Weekly Events and Coming Soon....

- Mon:**
- Short Mat Bowls 19.30 VH (VH = Village Hall)
  - (1st) Film of the Book VH
  - Refuse Collection
- Tues:**
- Jolly Tots (term time) 09.30 VH
  - (2nd) Book Group 14.00 VH
  - Recorder Group 19.30 Church
- Weds:**
- Yoga, Level 1, 10.00, Yoga Extra Gentle 11.30 VH
  - (2nd) Parish Council 19.30 VH
  - (3rd )Women's Institute 14.00 VH
  - (4th) Film Group 19.15 VH
  - (Last) Golden Threads 14.00 VH
- Thur:**
- First Stanton Rainbows 17.00 VH
  - (Alt) Short Mat Bowls 14.00 VH
  - Art Group 14.00 VH
- Fri:**
- Coffee Morning 10.00—12.00 Church
  - Little Lights 10.00—11.00 Church
  - Village Voices Choir 14.00 VH
  - (1st) Baby and toddler clothes sale 09.00 Church
- Sun:**
- Mount Zion Church 10.30 & 18.00 VH
  - Church Service 11.00 St Mary's Church
- April:** 2nd, Mobile Library (p.60), 4th, Hullavington Hub (p.16), 10th, Good Friday Service (p.23), 12th Easter Day Service (p.23), 17th, Film Group Extra (p.41), 18th Spring Quiz (p.16), 22nd, 'Knives Out' Film (p.41), 22nd, Annual Parish Meeting (p.16)
- May:** 9th, Remi Harris RAW event (p.36), 10th VE Day Service, (p.23), 15th Film Group Extra (p.41), 18th Scrabble Afternoon WI (p.38), 23rd London Trip (p.40), 27th 'Little Women' Film (p.41), 29th 'End of Track' concert (p.16).

**Please check for cancellations due to Covid-19!**